



morton.

LINDFIELD 21 Booraba Avenue

🛏 5 🚿 3 🚗 2

Nestled in a peaceful cul-de-sac location on a level block of approximately 1364sqm is this well presented family home offering a versatile open floorplan with generous living areas and a large alfresco deck with views across the reserve. Conveniently located only moments to public transport, Moore street village shops, cafes, restaurants and child friendly parks.

- Multiple living areas including family and casual dining
- Views over tranquil bushland and surroundings
- Open plan timber gas kitchen with stainless steel appliances
- Sunny alfresco deck with views across the reserve
- Direct access to great north walk
- Separate upstairs rumpus room or kids retreat
- Main bedroom with ensuite and walk-in wardrobe
- Another four large bedrooms, three with built-in robes
- Well maintained level garden area
- In ground heated swimming pool
- Double lock-up garage with internal access
- Beaumont Road Primary School and Killara High School

View

As advertised or by appointment

Agent

Sarah Fowell

📞 0437 492 129

✉ sarah@morton.com.au

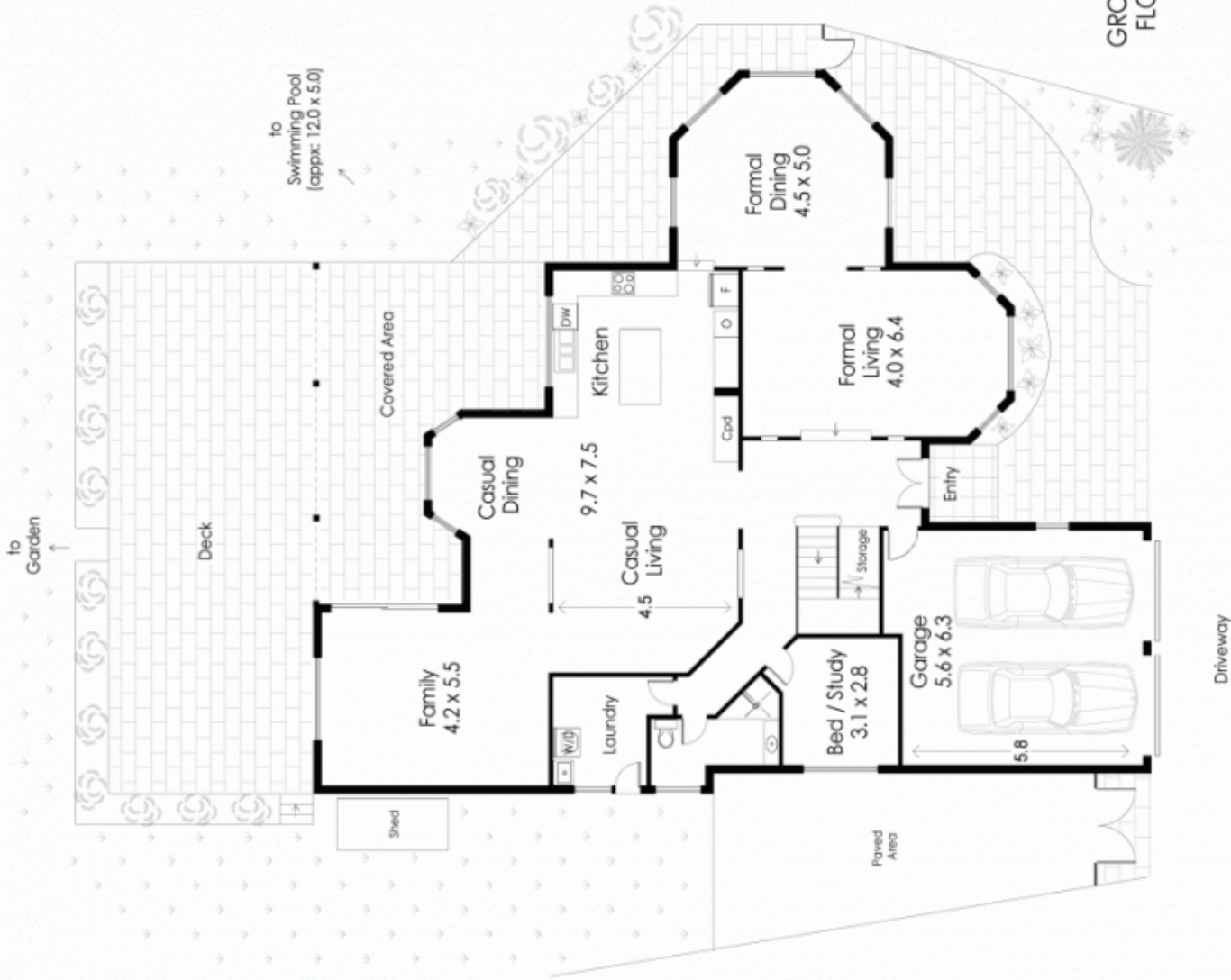
morton.com.au

21 Booraba Avenue Lindfield

FIRST FLOOR



GROUND FLOOR



and Floor Area approx. 330sqm.
 including Garage, not including Terraces, Paved Areas, etc.)

Designer: Purple Runner Pty. Ltd. A.B.N. 60 163 607 480

Drawing as NORTHSIDE FLOORPLANS ROSEVILLE

144 2143 Mdb. 04/20/23 101 03/12

Floor plan serves only as a guide for promotional purposes and

should not be relied upon for any specific detail. No liability will be accepted.