



morton.

PYRMONT 217/3 Darling Island Road

 3  2  2

Surrounded by Sydney Harbour, this tranquil waterfront sanctuary is only a short stroll to the city centre. Literally sitting on the harbour's edge, this apartment's exceptional re-design with superb finishes ensure it stands out above the rest. With cross ventilation and an abundance of natural light illuminating the large open plan living and dining areas, this apartment is too good to miss.

- Linear design with dual aspect across entire level
- Open plan living with soaring ceilings overlooking the water
- Step through concertina doors to generous outdoor entertaining
- Exceptionally large and light-filled kitchen with Miele appliances
- King sized master with walk through robes and superb ensuite
- Second and third generous bedrooms with built-in wardrobes
- Additional full sized bathroom finished in marble
- Additional balcony with timber decking off bedrooms
- Dual zone reverse cycle air conditioning

morton.com.au

View

As advertised or by appointment

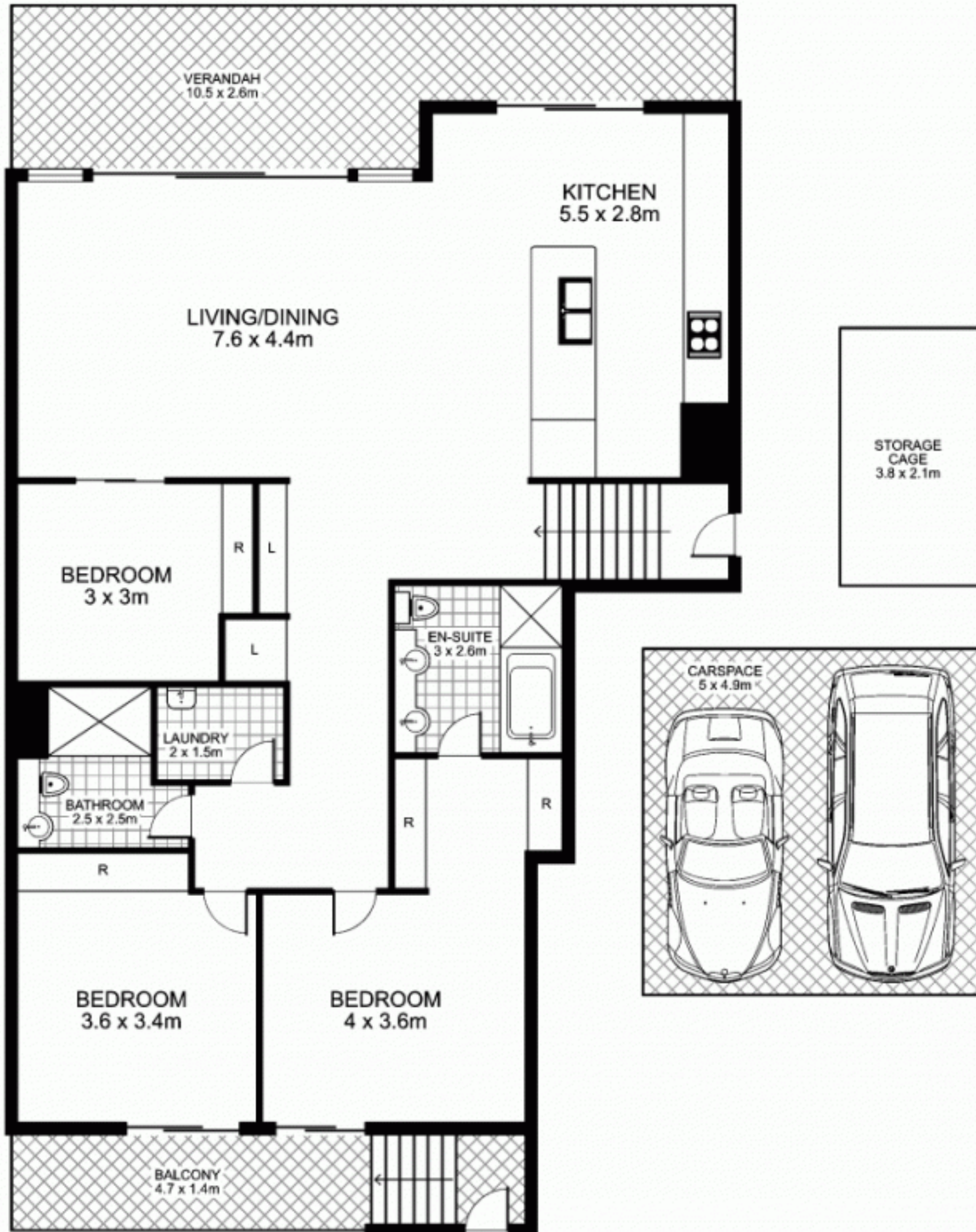
Agent

James Crow

 0410 593 057

 james@morton.com.au

217/3 Darling Island Road, PYRMONT



This floor plan is intended as a guide only. Layout dimensions are approximate only. No representations or warranties of any nature whatsoever are given or intended. Any person using this information should rely on their own enquiries



NORTH

Plans by
surroundpix
icom.au
1300 30 32 40