



morton.

BONDI 16/24 Sandridge Street

 2  1

Tucked away in a peaceful location and ripe for renovation is this two bedroom apartment situated in a recently upgraded building. Set right on the cliff tops between Bondi and Tamarama beaches, this apartment's spectacular northerly views from every room span across Bondi Beach to the Maroubra headlands.

- Spectacular views from every room
- Open plan living with separate lounge and dining
- Two bedrooms with built-in wardrobes
- Abundance of natural light, north facing balcony
- Marble bathroom, laundry facilities, ample storage
- Lift access with common undercover parking spaces
- Access to coastal walk

View

As advertised or by appointment

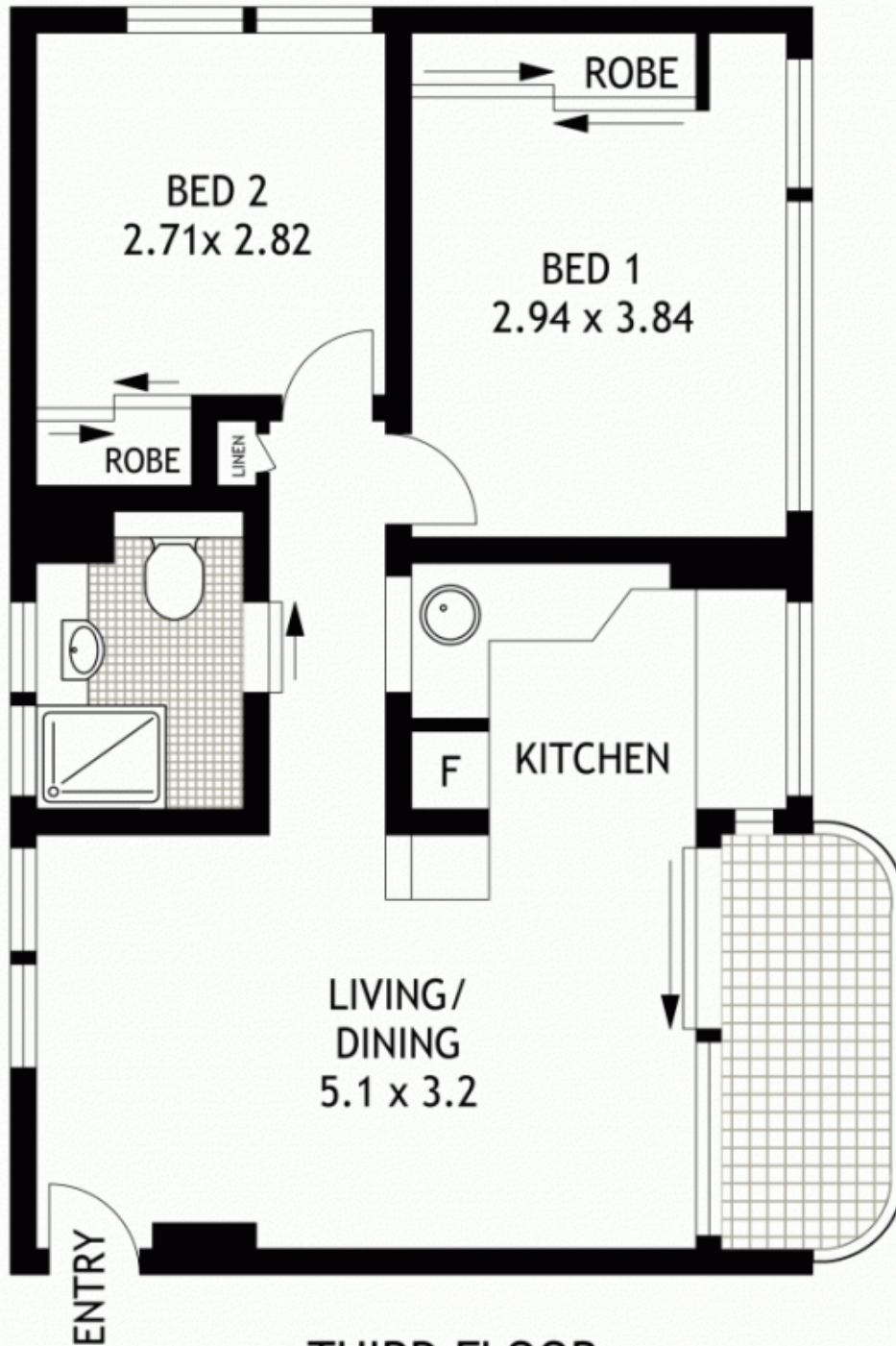
Agent

Sarah Fowell

 0437 492 129

 sarah@morton.com.au

morton.com.au



THIRD FLOOR



16/24 SANDRIDGE STREET

BONDI

SCAPE Floor Planing Disclaimer: This floor plan is conceptual only. it is provided for illustrative purposes only and should not be relied upon. We make no guarantees to the correctness of this plan. All interested parties should make and rely on their own enquiries in determining the accuracy of the information contained in this floor plan.