



morton.

GLEBE 1/103 Ferry Road

 2  2  1

Prestigiously positioned in what is undoubtedly one of Sydney's premier waterfront enclaves, this exceptionally spacious apartment set out over one level exudes quality throughout. With large outdoor living space off either side of this home the sun can be enjoyed all year round. This is ultimate inner city living only moments from Glebe's cafe culture, restaurants and other amenities.

- Perfectly located in quiet cul-de-sac adjoining waterfront reserve
- Huge open plan living opens to private courtyard and gardens
- Separate formal dining opens to additional courtyard
- Exceptional natural light throughout living areas
- Two separate double bedrooms with built-ins, master with ensuite
- Integrated Smeg, gas kitchen with CaesarStone benchtops
- Contemporary bathrooms, main with tub, internal laundry
- Ducted air-conditioning
- Positioned on end of block with only one common wall

morton.com.au

View

As advertised or by appointment

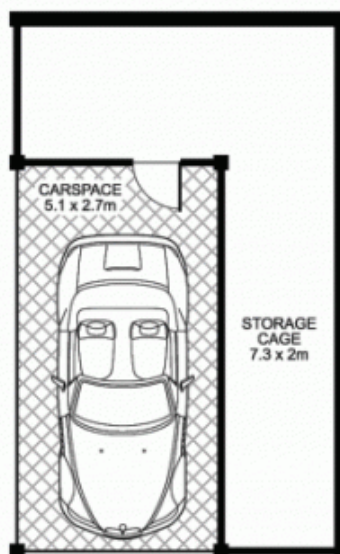
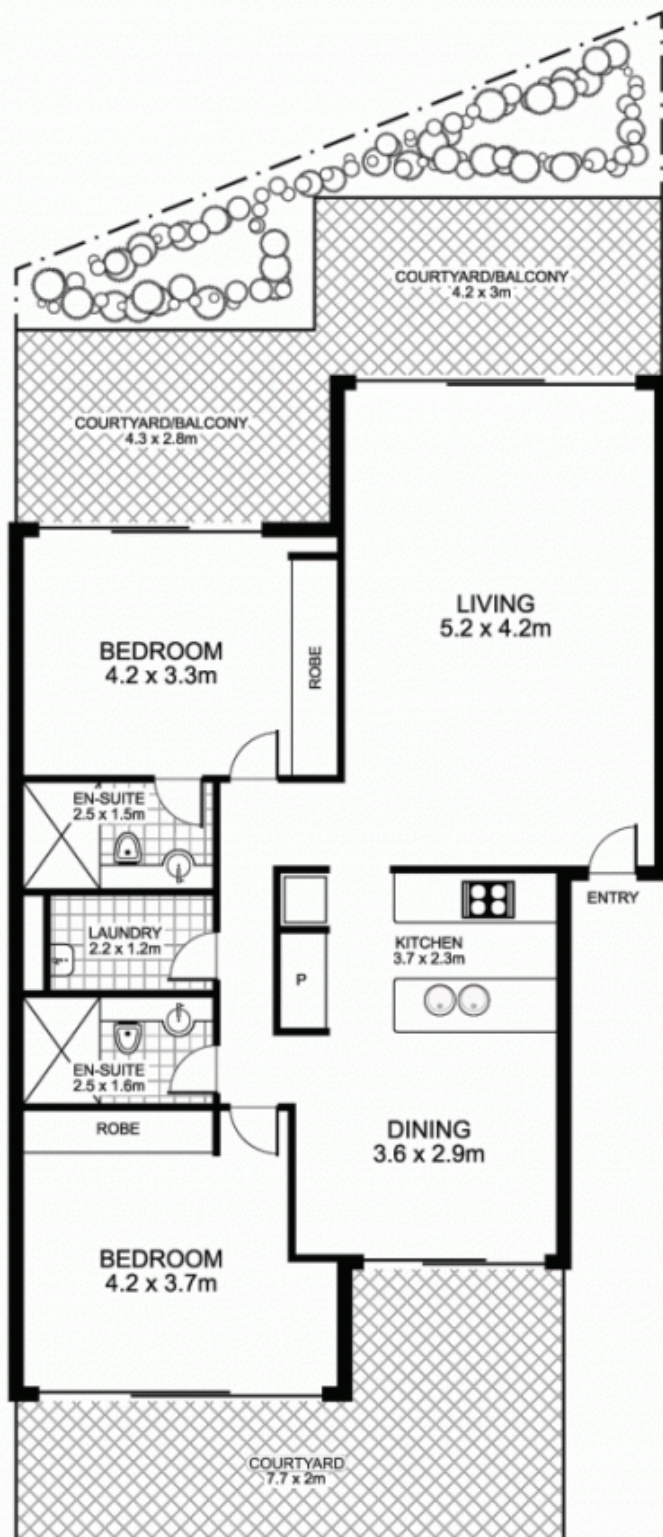
Agent

James Crow

 0410 593 057

 james@morton.com.au

1/103 Ferry Road, GLEBE



This floor plan is intended as a guide only. Layout dimensions are approximate only. No representations or warranties of any nature whatsoever are given or intended. Any person using this information should rely on their own enquiries



Plans by
surroundpix
icom.au
1300 30 32 40