



# morton.

**SYDNEY** 340/569-581 George Street

 2  2  2

This chic city pad set on a total of 213 square metres, features a rare and expansive north-east facing alfresco entertainers' terrace. The stylish apartment is situated high up on level 28 and is located in the vibrant heart of Sydney. Enjoy a life of convenience with many amenities at your doorstep.

- Double corner position with only one common wall
- Views over the city skyline
- Large wrap around entertainers' terrace
- Two large bedrooms with built-ins and walk-in robes
- Cleverly integrated storage, quality timber flooring
- Ducted air-conditioning
- Sleek granite Smeg gas kitchen
- Light filled living with floor-to-ceiling windows
- Secure side-by-side parking
- Resort style facilities including pool, sauna, gym and gaming room
- 24 hour concierge service
- Ideal city pad or astute investment opportunity

### View

As advertised or by appointment

### Agent

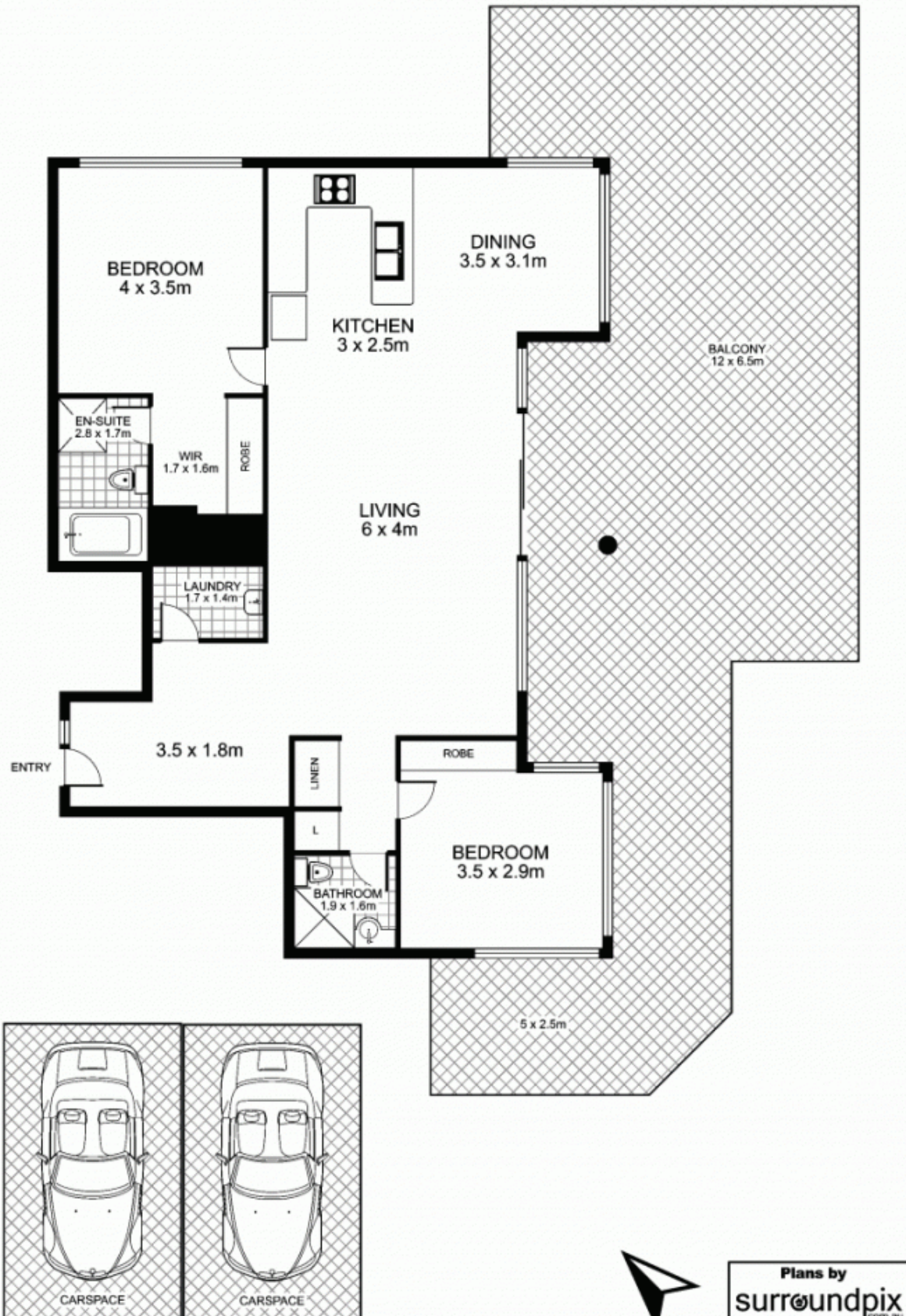
**Sarah Fowell**

 0437 492 129

 sarah@morton.com.au

[morton.com.au](http://morton.com.au)

**340/569 George Street,  
SYDNEY**



This floor plan is intended as a guide only. Layout dimensions are approximate only. No representations or warranties of any nature whatsoever are given or intended. Any person using this information should rely on their own enquiries



Plans by  
**surroundpix**  
com.au  
1300 30 32 40