



morton.

PYRMONT 601/25 Refinery Drive

 2  2  1

Located just metres from the harbour foreshore and elevated high up on level six, this two bedroom apartment boasts stunning views over the Anzac Bridge. The Tony Caro architecturally designed linear building of just 18 limited edition apartments "The Escarpment" features a 150 year old sandstone wall showcasing Pyrmont's history.

- Flawless design throughout
- Stainless steel gourmet kitchen with European appliances
- Kitchen with ample cupboard space
- Living room bathed in natural light
- Storage compartment integrated in living room
- Anzac Bridge and harbour foreshore as your backdrop
- Designed by renowned architect Tony Caro
- Two large bedrooms with built-in wardrobes
- Two immaculate bathrooms
- Resort style facilities, pool, gym, tennis courts, function halls
- Pet friendly building
- 24 hour onsite security

View

As advertised or by appointment

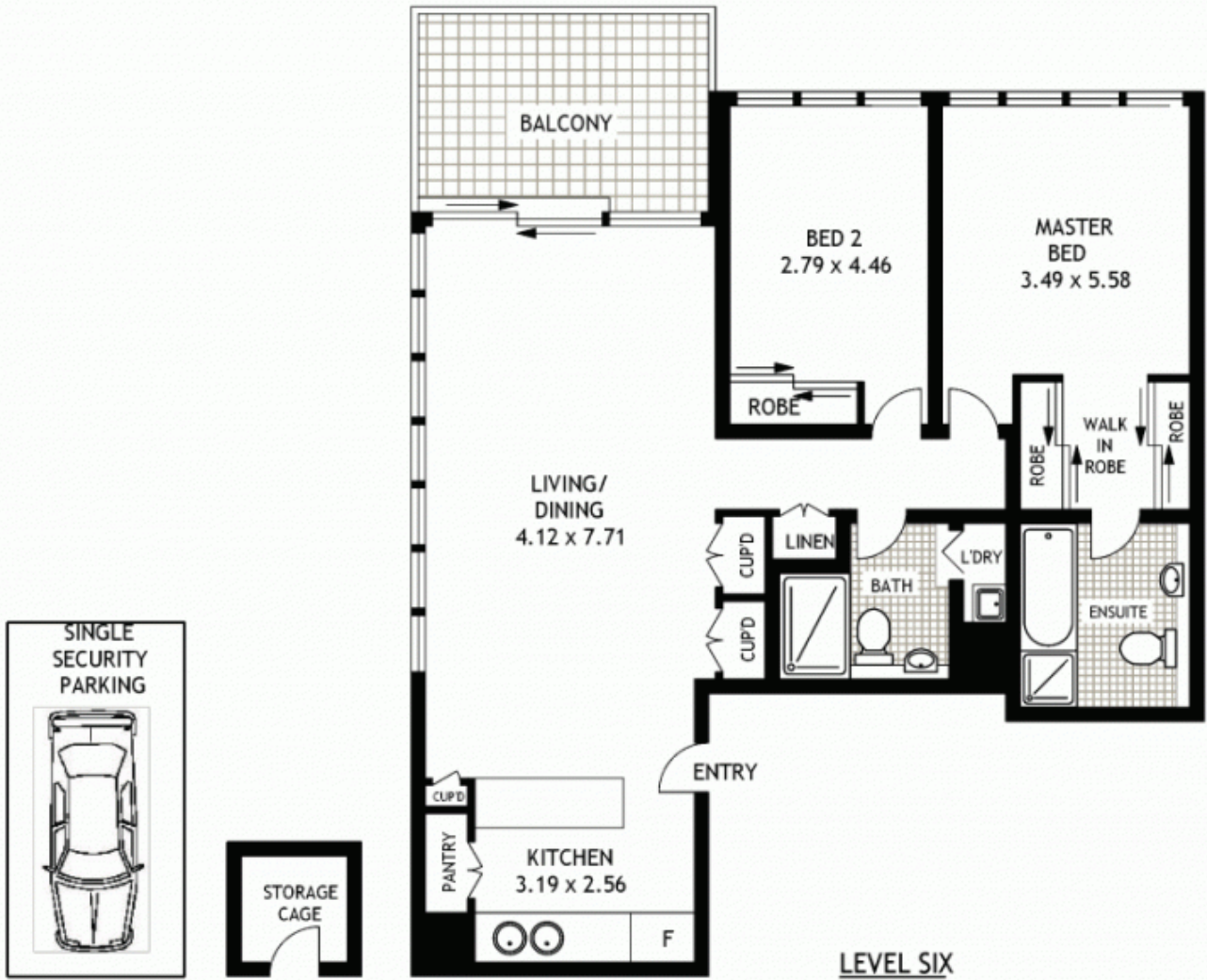
Agent

Ian Qiu

 0447 696 425

 ian@morton.com.au

morton.com.au



601/25 REFINERY DRIVE

PRYMONT

SCAPE Floor Planing Disclaimer: This floor plan is conceptual only. It is provided for illustrative purposes only and should not be relied upon. We make no guarantees to the correctness of this plan. All interested parties should make and rely on their own enquiries in determining the accuracy of the information contained in this floor plan.