



morton.

PYRMONT 136/3 Darling Island Road

 2  2  2

This fantastically positioned two bedroom harbour front apartment plus study is located within a luxurious waterfront enclave. Centred around picture perfect views of the iconic Harbour Bridge, sparkling Sydney foreshore and an ever changing parade of maritime activity.

- North facing open plan living with soaring ceilings
- Opens to balcony with the Harbour Bridge as your backdrop
- Entertainers' kitchen, large island bench and European appliances
- Master with balcony, walk through wardrobe and ensuite
- Large second bedroom with built-in wardrobes
- Complete study with work station space
- Dual zone air conditioning, C-Bus lighting
- Exterior privacy screens, concierge, building security
- Secure undercover dual tandem parking and storage cage
- Facilities include indoor heated pool, gym, spa and sauna

View

As advertised or by appointment

Agent

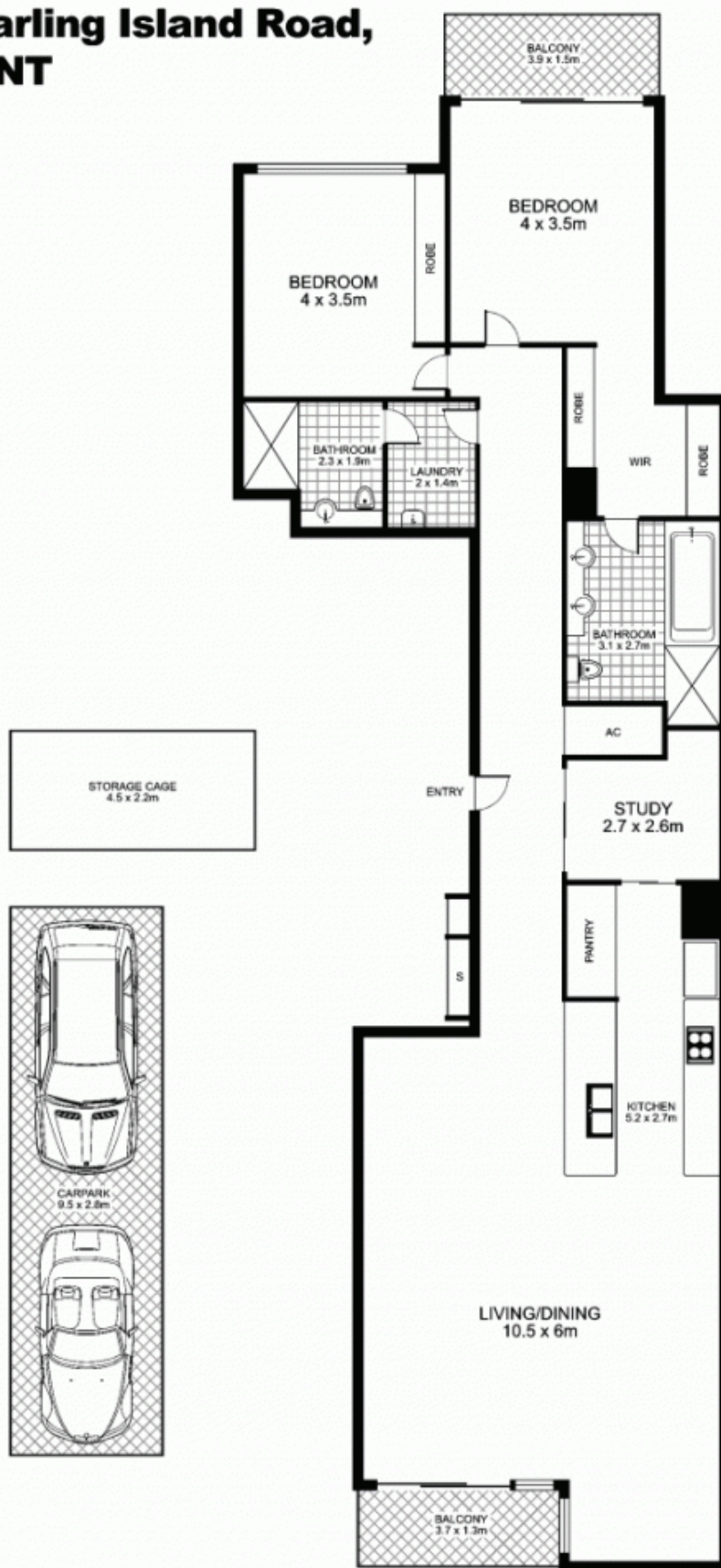
James Crow

 0410 593 057

 james@morton.com.au

morton.com.au

136/3 Darling Island Road, PYRMONT



Plans by
surroundpix
icom.au
1300 30 32 40

This floor plan is intended as a guide only. Layout dimensions are approximate only. No representations or warranties of any nature whatsoever are given or intended. Any person using this information should rely on their own enquiries