



# morton.

**PYRMONT** 31/1 Murray Street

 3  2  2

Located within a stroll across the Darling Harbour footbridge to the city this spacious apartment, set out over one level, will appeal to those seeking the ultimate convenience to the city centre in an exceptionally presented contemporary setting.

- Enormous open plan lounge and separate dining with high ceilings
- Deep private balcony ideal indoor/outdoor entertaining
- Superb kitchen with breakfast area and pigeon hole shelving
- Ample granite bench space and Miele stainless steel appliances
- King sized master with ensuite and his and her built-in wardrobes
- 2nd and 3rd bedrooms with built-ins overlooking rainforest atrium
- Ducted air-conditioning, exterior privacy sliding screens
- Secure undercover side by side parking plus storage
- Full building security with lift access
- Further features include full brick construction, main entry lobby

### View

As advertised or by appointment

### Agent

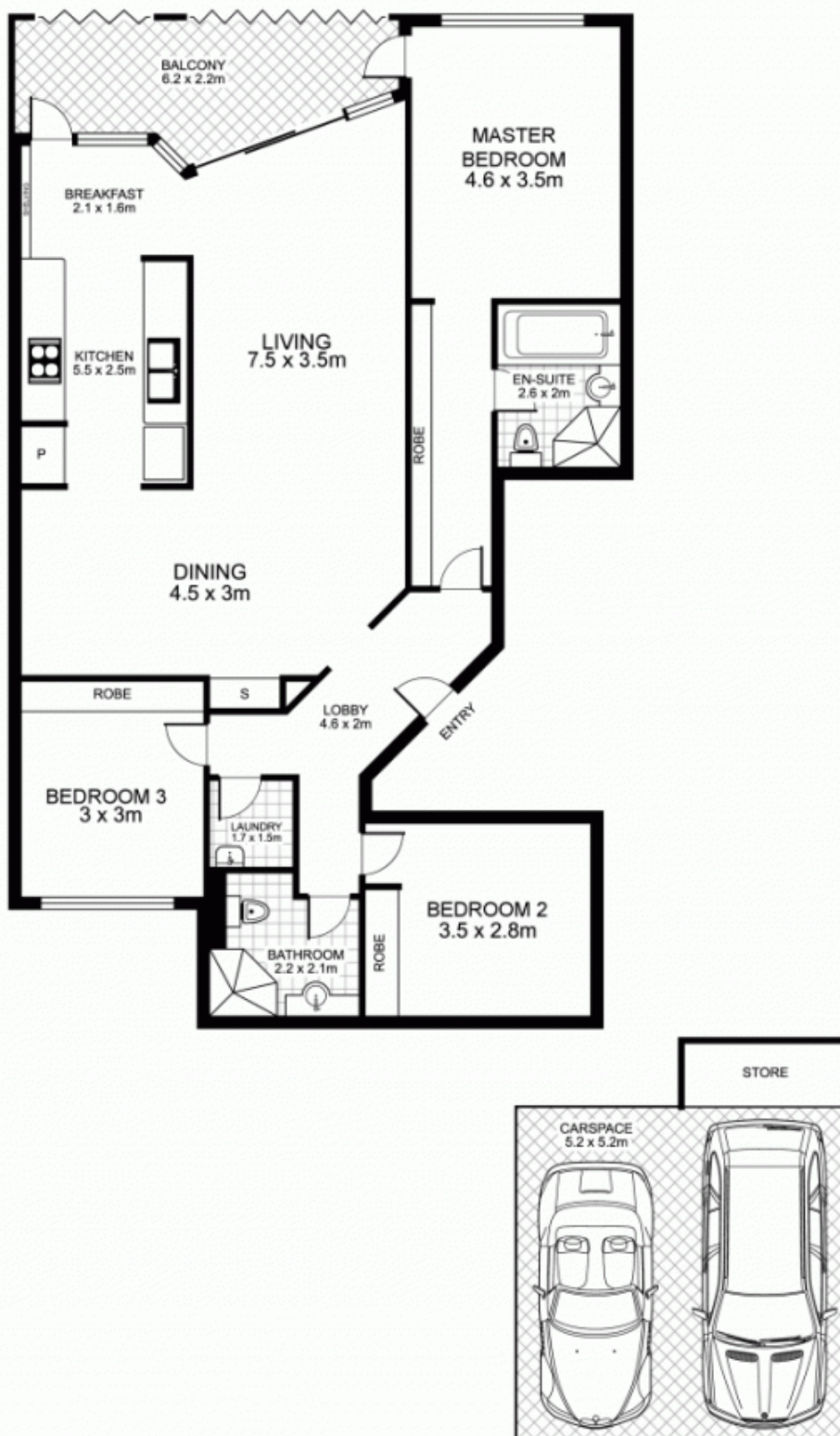
**James Crow**

 0410 593 057

 james@morton.com.au

[morton.com.au](http://morton.com.au)

# 31/1 Murray Street, PYRMONT



This floor plan is intended as a guide only. Layout dimensions are approximate only. No representations or warranties of any nature whatsoever are given or intended. Any person using this information should rely on their own enquiries

  
**NORTH**

Plans by

**surroundpix**

icom.au

1300 30 32 40