



morton.

PYRMONT 76/134-150 Bulwara Road

 3  2  2

Located within a short stroll to all that the city has to offer, this enormous penthouse enjoys spectacular views of Blackwattle Bay and the Anzac Bridge and will redefine your notion of expansive indoor/outdoor living. With over 275 square metres across one level this property boasts a versatile floor plan with loads of potential.

- Large formal lounge opens to balcony with skyline city views
- Informal sun drenched lounge/dining with full length bi-fold doors
- Opens to enormous 120sqm terrace with Anzac Bridge views
- Idyllic indoor/outdoor living ideal for entertaining
- Modern kitchen with granite bench tops
- Euro gas appliances, ample cupboard, dishwasher drawers
- Master bedroom with built-ins, ensuite and spa bathtub
- Equally spacious second bedroom with built-ins
- Third bedroom or guest quarters with Blackwattle Bay views
- Ducted and split system air-conditioning
- Security building entry and lift access
- Resort style facilities include indoor pool, spa and gym

View

As advertised or by appointment

Agent

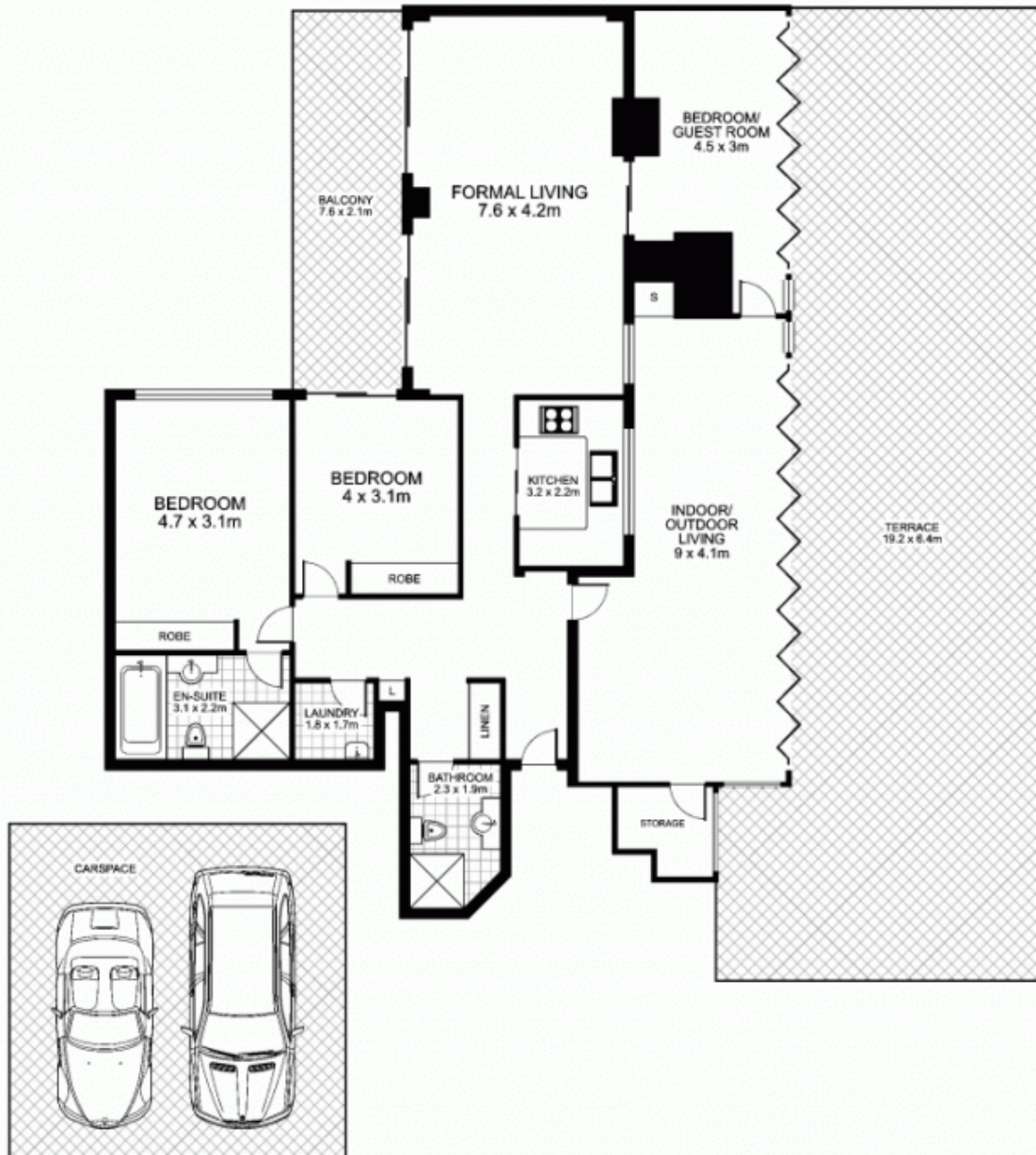
James Crow

 0410 593 057

 james@morton.com.au

morton.com.au

76/134-150 Bulwara Road, PYRMONT



Plans by
surroundpix
icom.au
1300 30 32 40

This floor plan is intended as a guide only. Layout dimensions are approximate only. No representations or warranties of any nature whatsoever are given or intended. Any person using this information should rely on their own enquiries