



morton.

PYRMONT 1501/8 Distillery Drive

 3  2  2

Located on the prized northern Pyrmont peninsula in Jacksons Landing this bright contemporary apartment, located on the 15th level with a north east aspect, offers great open plan space and point blank views of the Harbour Bridge and city. Enjoy strolls along the harbour foreshore around to Darling Harbour or take the footbridge to the city centre.

- Sublime light filled living flows to large balcony
- Floor to ceiling glass frames magnificent harbour and city views
- Sleek kitchen with new stone benches
- New gas cooktop with stainless steel European appliances
- Three double bedrooms with built-in wardrobes
- Separate king sized master bedroom with ensuite
- Two superb mosaic bathrooms and powder room
- Air-conditioning, ample storage
- Security intercom and lift access
- Two secure car spaces and storage
- Outdoor pool and timber sundeck with harbour views
- Well equipped gymnasium overlooking pool area

morton.com.au

View

As advertised or by appointment

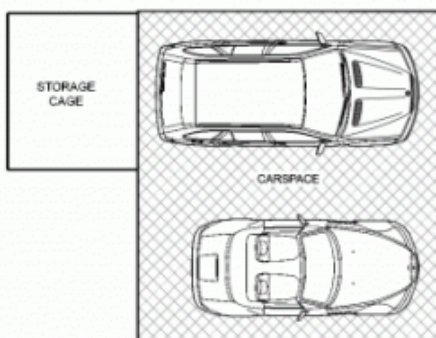
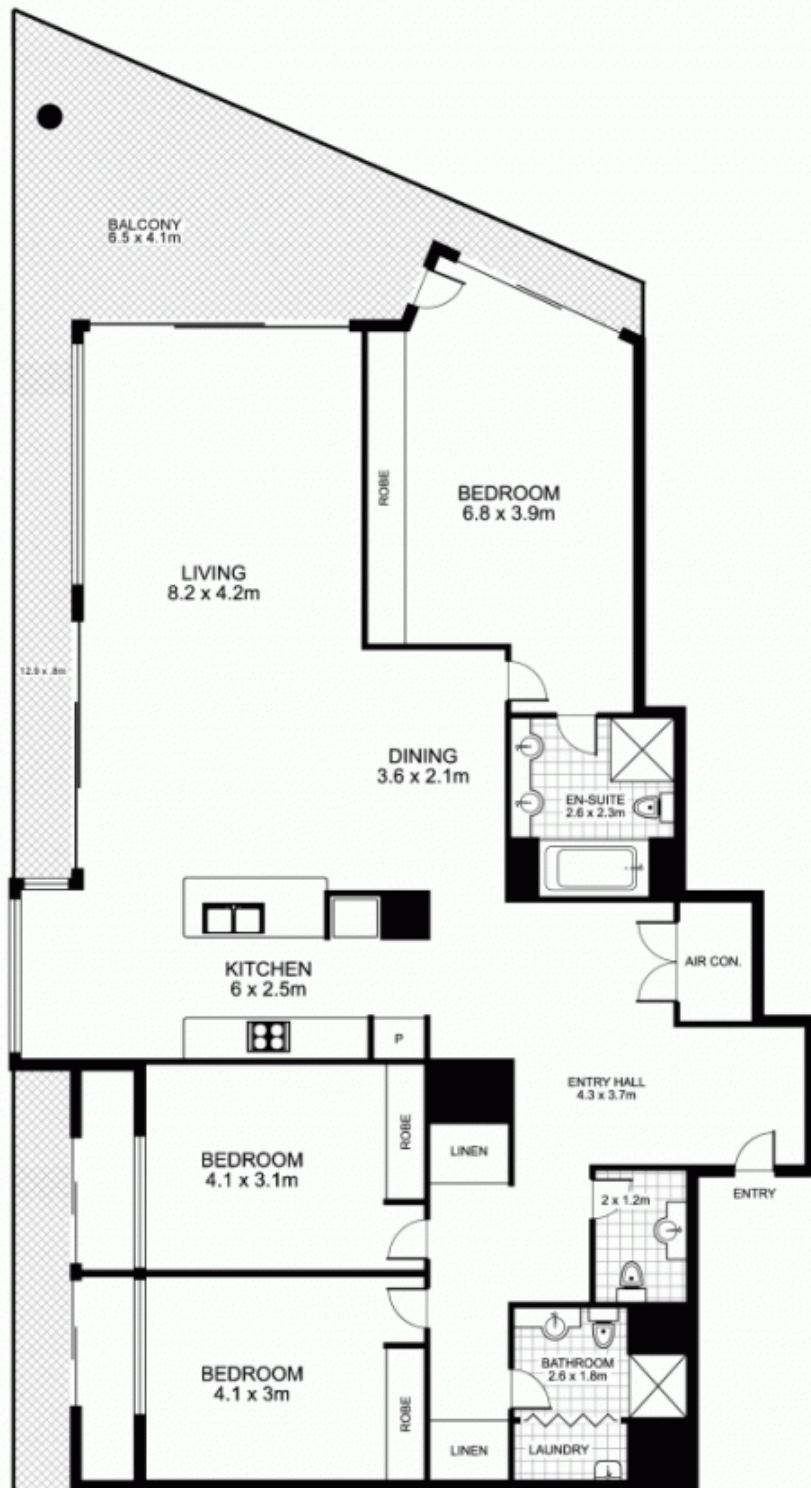
Agent

James Crow

 0410 593 057

 james@morton.com.au

1501/8 Distillery Drive, PYRMONT



Plans by
surroundpix
com.au
1300 30 32 40

This floor plan is intended as a guide only. Layout dimensions are approximate only. No representations or warranties of any nature whatsoever are given or intended. Any person using this information should rely on their own enquiries