



morton.

PYRMONT 613/66 Bowman Street

 3  2  2

Fleetview is highly sought after as it was one of Jacksons Landing's first flagship buildings and is truly at the centre of what is undoubtedly Sydney's premier harbourside community. Boasting approximately 139sqm of living and entertaining space this three bedroom apartment offers, size, light and position.

- Large living area opens onto spacious balcony
- Open plan kitchen with European appliances
- Separate living and dining area plus a private study
- Two balconies, air-conditioning, internal storage
- Master bedroom with ensuite and built-in wardrobes
- Second and third bedrooms with built-in wardrobes
- Two secure parking spaces and large storage cage

View

As advertised or by appointment

Agent

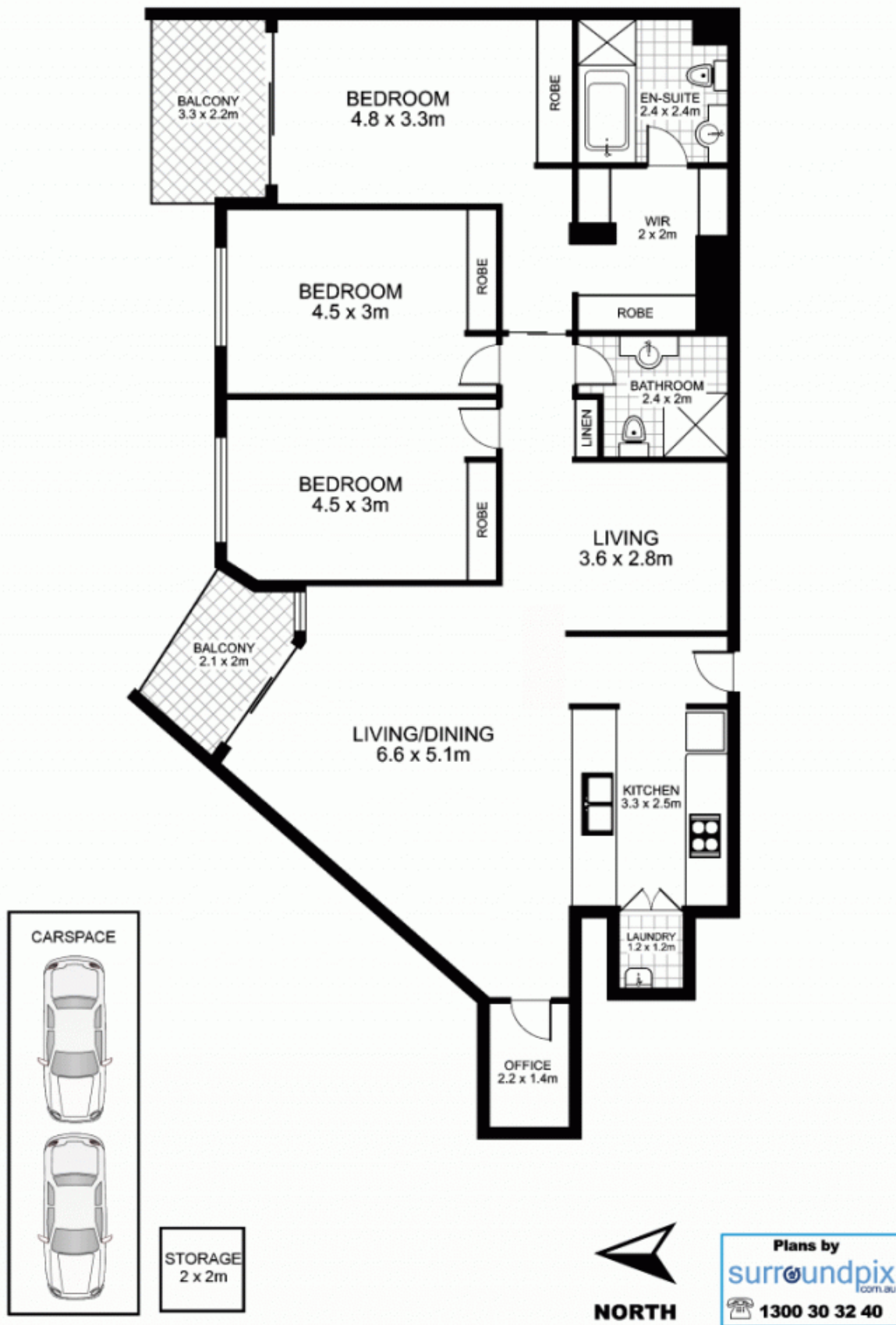
Sarah Fowell

 0437 492 129

 sarah@morton.com.au

morton.com.au

613/66 Bowman Street, PYRMONT



This floor plan is intended as a guide only. Layout dimensions are approximate only. No representations or warranties of any nature whatsoever are given or intended. Any person using this information should rely on their own enquiries