



# morton.

**PYRMONT** 28/56A Pirrama Road

 1  1  1

Located on the prestigious 'Sydney Wharf' this 130 square metre waterfront apartment exudes unsurpassed quality and open plan space. Literally on the water's edge with uninterrupted views across Sydney Harbour to the city.

- Large and light filled living opens onto enormous outdoor terrace
- Uninterrupted views across Sydney Harbour to the city
- Superb kitchen with Miele appliances and exotic stone finishes
- King sized master bedroom with built-in wardrobes
- High ceilings and Blackbutt timber floors
- Full building security and concierge service
- Under cover secure parking plus exclusive storage
- Air-conditioning, onsite fine dining
- Facilities include indoor pool and gym equipment
- Option to purchase 12.5 metre berth in private berthing facility

### View

As advertised or by appointment

### Agent

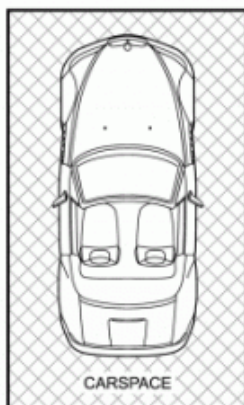
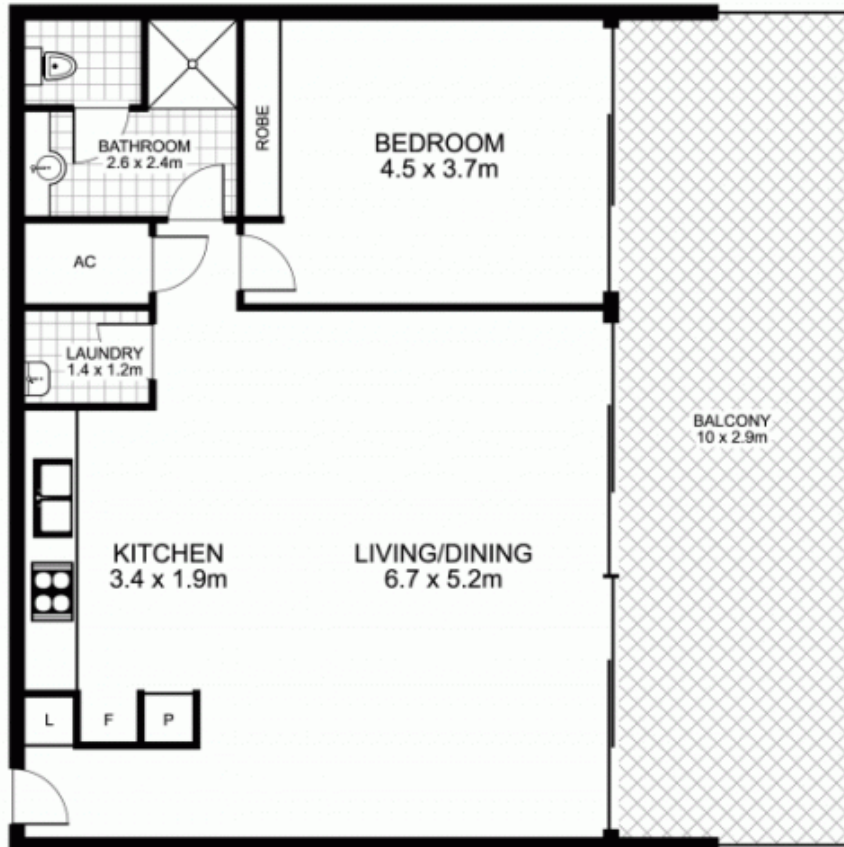
**James Crow**

 0410 593 057

 james@morton.com.au

[morton.com.au](http://morton.com.au)

# 28/56a Pirrama Rd, PYRMONT



Plans by  
**surroundpix**  
lcom.au  
1300 30 32 40

This floor plan is intended as a guide only. Layout dimensions are approximate only. No representations or warranties of any nature whatsoever are given or intended. Any person using this information should rely on their own enquiries