



morton.

MEADOWBANK 4/28 Meadow Crescent

🛏 2 🚿 1 🚗 1

Spacious two bedroom apartment located in a quiet street and only a short stroll to Meadowbank train station, shops, RiverCat and parklands.

- Spacious lounge with polished timber floors opens onto balcony
- Good sized bedrooms with built-in wardrobes
- Bright and sunny modern eat-in kitchen
- Large shared laundry with industrial machines
- Security building in a block of 15
- Currently rented for \$370 per week
- Car space located at rear of building
- Easy access to Meadowbank park, schools and TAFE

View

As advertised or by appointment

Agent

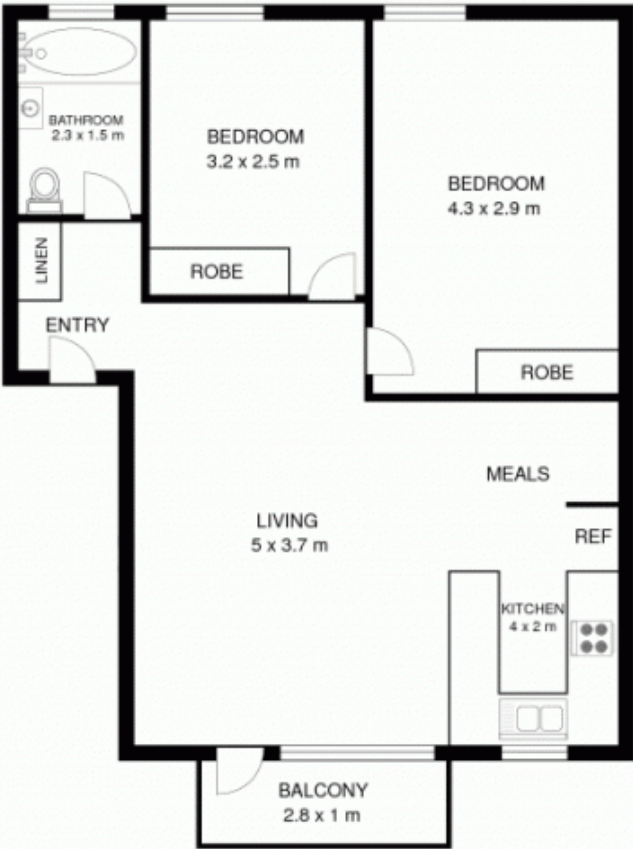
Sarah Fowell

📞 0437 492 129

✉ sarah@morton.com.au

morton.com.au

4/28 Meadow Crescent,
MEADOWBANK



NORTH

Plans by
surroundpix
room.au
1300 30 32 40

This floor plan is intended as a guide only. layout dimension are approximate only. No representation or warranties of any nature whatsoever are given or intended. Any person using this information should rely on their own enquiries.