



morton.

PYRMONT 303/8 Distillery Drive

🛏 3 🚿 2 🚗 2

Located on the prized northern Pyrmont peninsula in 'Jacksons Landing' this bright contemporary apartment with a north east aspect offers great open plan space, privacy and tranquil treetop and parkland outlook.

- Open plan lounge / dining flows to outdoor entertaining
- Sleek kitchen with CaesarStone island bench
- Gas cooktop with stainless steel European appliances
- Three double bedrooms with built-ins
- Master bedroom with ensuite and Juliet balcony
- Two superb mosaic bathrooms and powder room
- Reverse cycle air conditioning
- Secure intercom and lift access
- Amazing amount of internal storage space
- Two secure car spaces (tandem) and storage
- Fantastic outdoor pool and timber sundeck with harbour views
- Well equipped gym overlooking pool area

View

As advertised or by appointment

Agent

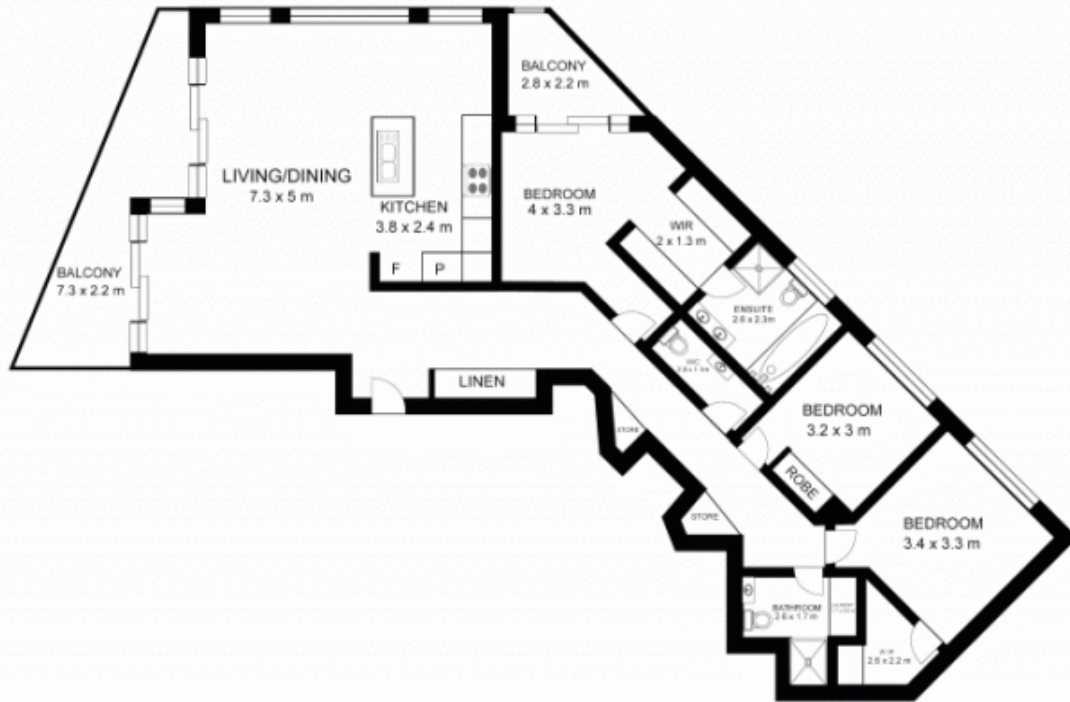
James Crow

📞 0410 593 057

✉ james@morton.com.au

morton.com.au

303/8 Distillery Drive,
PYRMONT

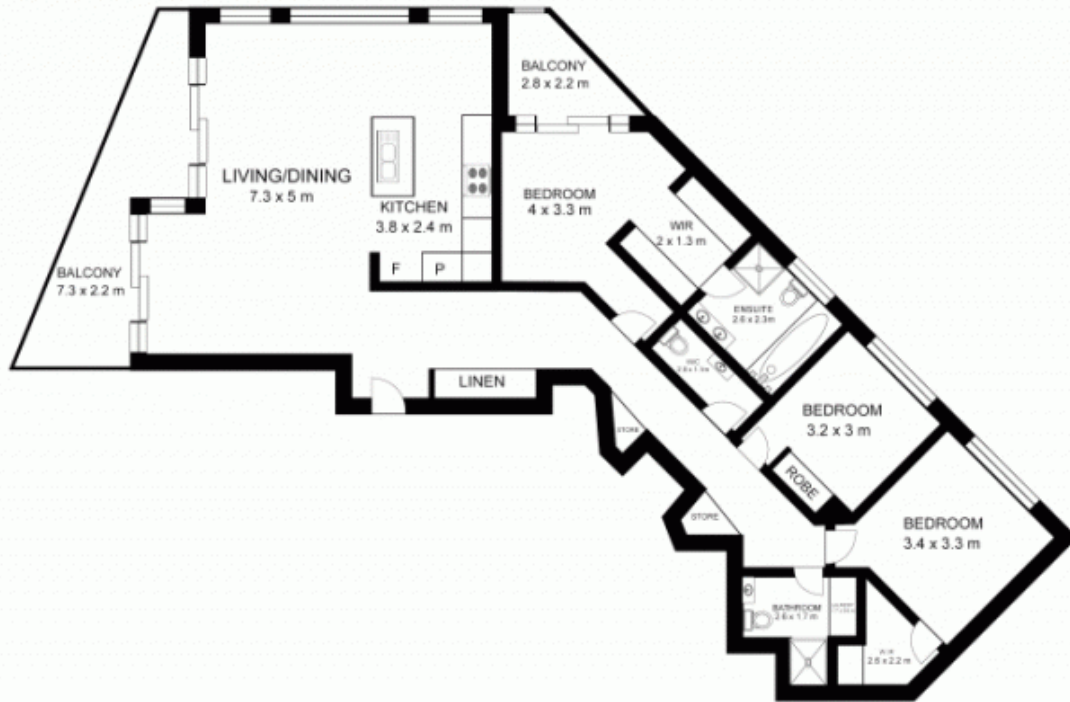


Area: 187sqm approx on title



This floor plan is intended as a guide only. Layout dimensions are approximate only. No representation or warranties of any nature whatsoever are given or intended. Any person using this information should rely on their own enquiries.

303/8 Distillery Drive,
PYRMONT



Area: 187sqm approx on title



This floor plan is intended as a guide only. Layout dimensions are approximate only. No representation or warranties of any nature whatsoever are given or intended. Any person using this information should rely on their own enquiries.