



morton.

PYRMONT 234/3 Darling Island Road

 2  2  2

Located on Darling Island's exclusive harbourside peninsula, this open plan two bedroom apartment will suit those seeking space, privacy and exceptional standards. Positioned right on the water's edge and spanning across the entire floor, this apartment enjoys expansive views of Sydney Harbour, the Bridge and city.

- Large open plan lounge and dining with soaring ceilings
- Opens to large balcony ideally suited to indoor/outdoor living
- Integrated kitchen with stone benchtops and Miele appliances
- Master bedroom with walk-through wardrobe and ensuite
- Equally spacious second bedroom with ensuite
- Additional guest powder room
- Reverse-cycle dual-zone air conditioning
- Building security with direct lift access
- Secure tandem parking
- Exclusive storage cage, concierge service
- Excellent facilities include 20 metre pool, gym, spa and sauna

View

As advertised or by appointment

Agent

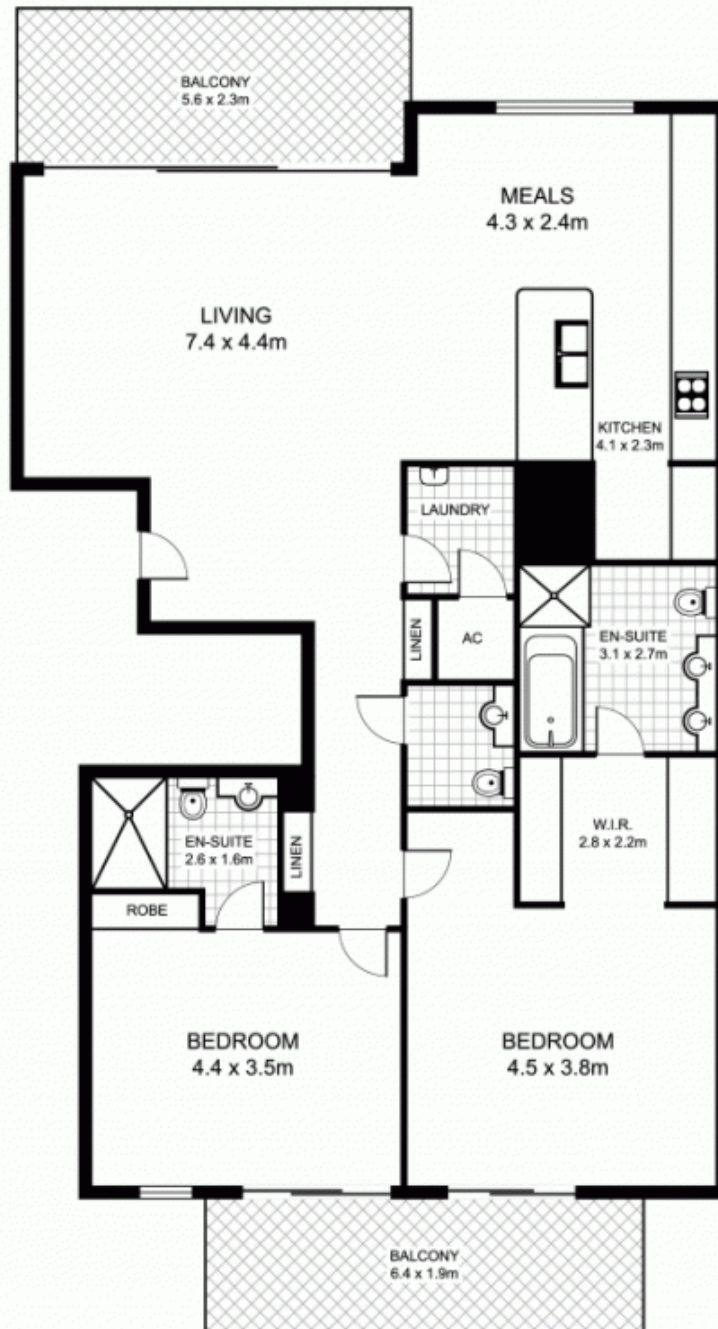
James Crow

 0410 593 057

 james@morton.com.au

morton.com.au

234/3 Darling Island Road, PYRMONT



This floor plan is intended as a guide only. Layout dimensions are approximate only. No representations or warranties of any nature whatsoever are given or intended. Any person using this information should rely on their own enquiries



Plans by
surroundpix
com.au
1300 30 32 40