



morton.

WOOLLAHRA 4/297 Edgecliff Road

 2  2  1

An ideal first home or investment, this generous apartment presents beautifully and includes all modern conveniences with nothing to spend on improvements. Ideally located to the city centre, Bondi Junction, the beaches and Woollahra's vibrant cafe and restaurant precinct, this apartment offers a convenient carefree lifestyle.

- Open plan living with high ceilings
- Leads to exterior patio and gardens
- New carpet throughout
- Freshly painted throughout
- New light fittings and window coverings
- Brand new kitchen with stainless steel appliances
- Large light filled master bedroom with built-in robes
- Equally spacious second bedroom with built-ins
- Two bathrooms (main with separate bathtub and shower recess)
- Secure under cover car space and visitor parking
- Secure building with lift access
- Excellent internal storage

morton.com.au

View

As advertised or by appointment

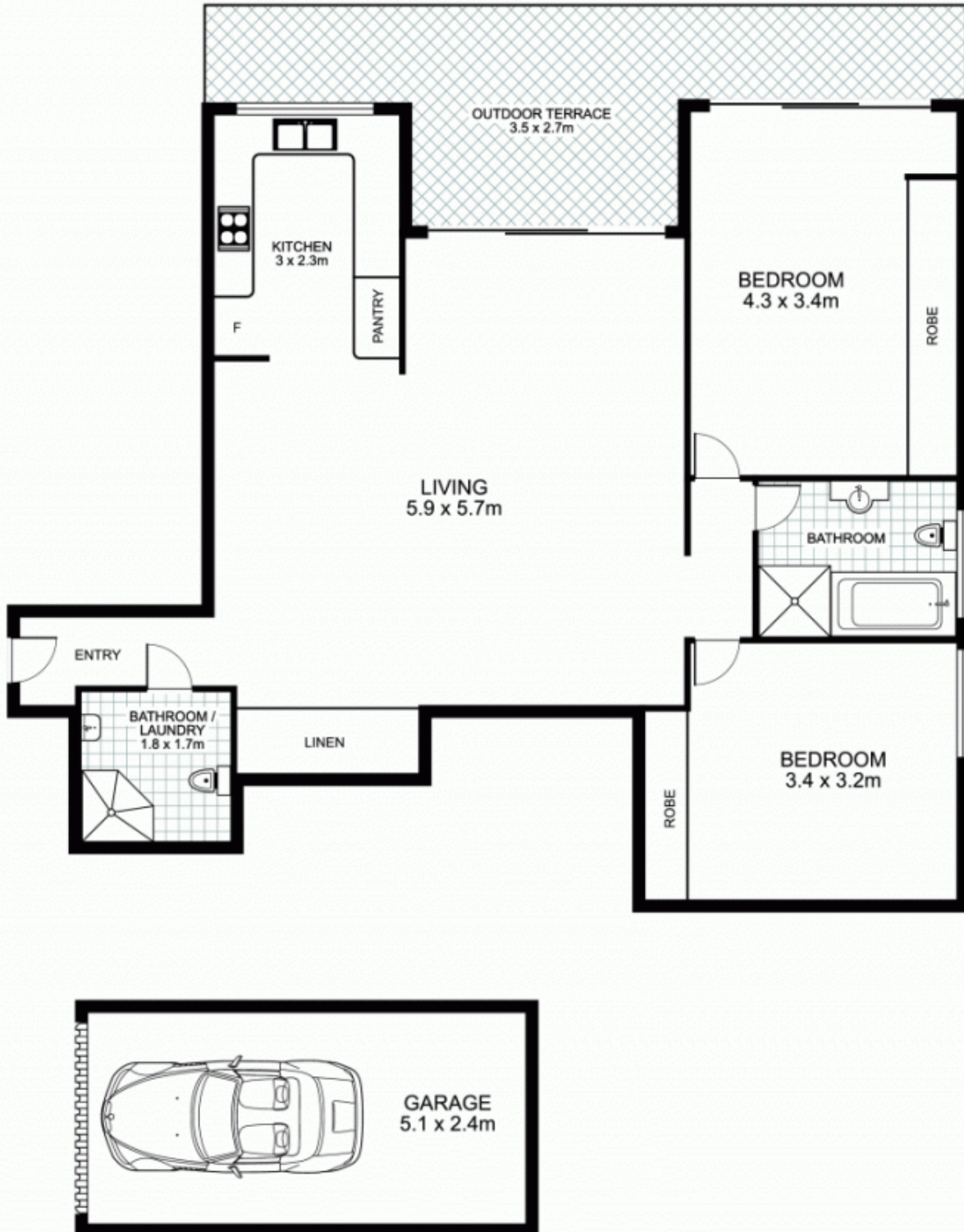
Agent

James Crow

 0410 593 057

 james@morton.com.au

4/297 Edgecliff Road, WOOLLAHRA



This floor plan is intended as a guide only. Layout dimensions are approximate only. No representations or warranties of any nature whatsoever are given or intended. Any person using this information should rely on their own enquiries