



morton.

PYRMONT 424/8 Point Street

 3  2  2

This elegant apartment, positioned enviably on the northern Pyrmont peninsula, is in an elevated cul-de-sac location. The tightly held Promontory Apartments, surrounded by waterfront parkland, boasts a private harbour outlook plus luxurious contemporary fit-out's fusing top-of-the-line finishes with inspirational design.

- Views of the city skyline
- Spacious living and dining
- Entertainers' balcony with the city as your backdrop
- Sleek kitchen with Miele stainless steel appliances
- Master bedroom with ensuite and walk-in-robe
- Double sized bedrooms with built-ins
- Ducted reverse-cycle air-conditioning
- Secure building entry, security alarm and lift access
- Two car tandem parking plus storage
- Resort style facilities include indoor heated pool, gym and sauna

View

As advertised or by appointment

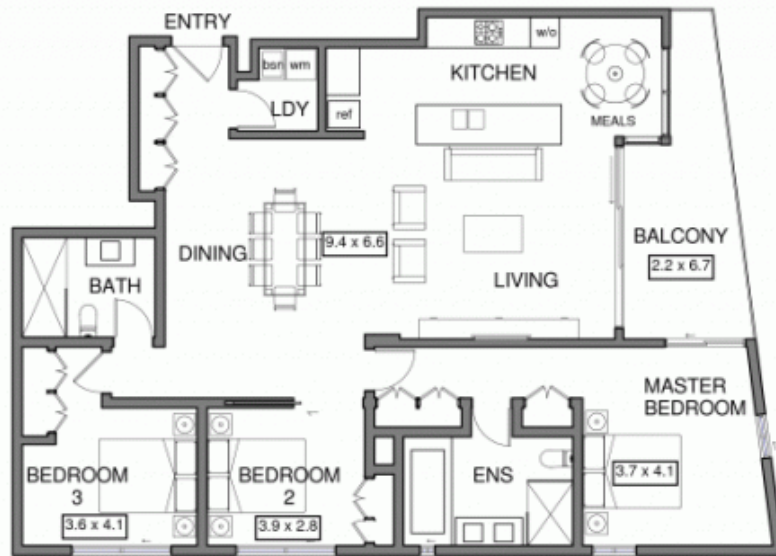
Agent

James Crow

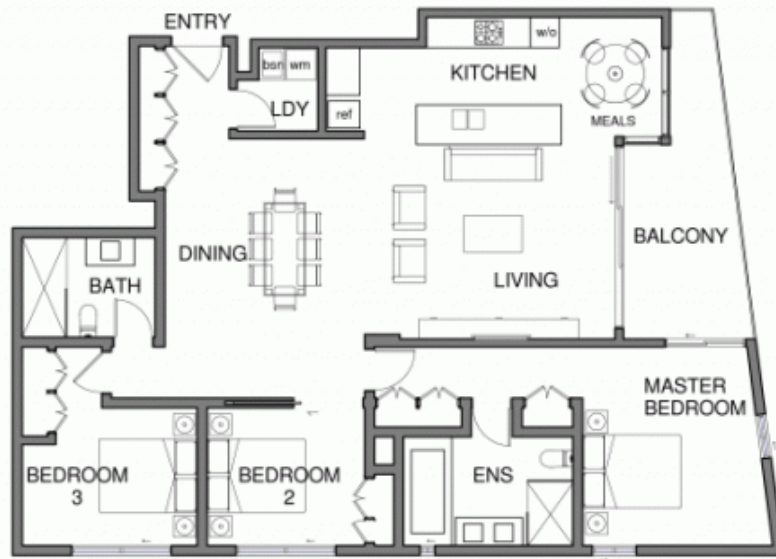
 0410 593 057

 james@morton.com.au

morton.com.au



1 **Apartment 424**
 1 : 100
 TOTAL AREA = 146m²
 0 5 10 m



1

Apartment 424

1 : 100

TOTAL AREA = 146m²

