



# morton.

**GLEBE** 6/90 Forsyth Street

 2  2  1

Prestigiously positioned in what is undoubtedly one of Sydney's premier waterfront enclave, this exceptional lifestyle residence exudes quality throughout. With breathtaking views of Blackwattle Bay and the Anzac Bridge, this is the ultimate in city living only moments from Glebes cafe culture, restaurants and other amenities.

- Perfectly located in luxurious waterfront development
- Two double bedrooms with built-ins, plus media room
- Integrated Smeg, gas kitchen with granite bench tops
- Open plan living/dining opens to entertainer's balcony
- Modern bathroom and ensuite, internal laundry
- Secure parking with caged storage area
- Walk to city or catch the light rail from this ideal location
- Moments to parks, shops, transport and schools
- Desired North aspect, air conditioning, a must see

### View

As advertised or by appointment

### Agent

**James Crow**

 0410 593 057

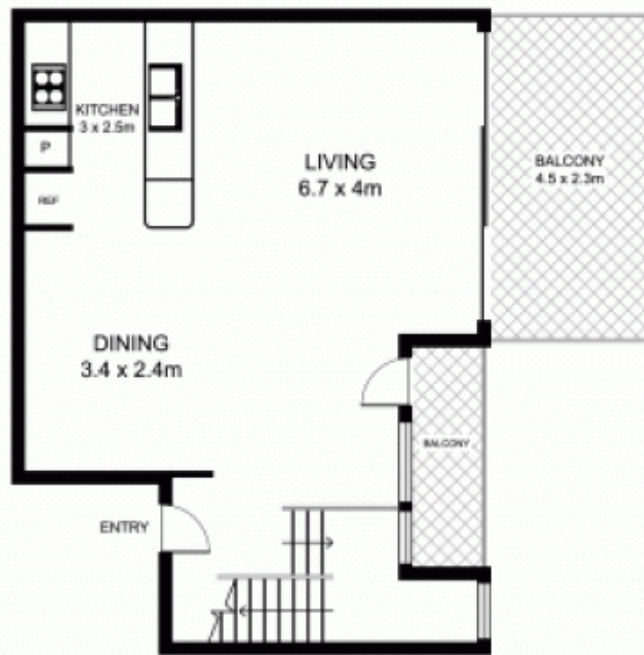
 james@morton.com.au

[morton.com.au](https://morton.com.au)

# 6/90 Forsyth Street, GLEBE



FIRST FLOOR



GROUND FLOOR



This floor plan is intended as a guide only. Layout dimensions are approximate only. No representations or warranties of any nature whatsoever are given or intended. Any person using this information should rely on their own enquiries