



morton.

PYRMONT 323/11 Pirrama Road

3 2 2

Located in the award winning development 'The Promontory' by Mirvac, this harbourside residence feels more like a house than an apartment. With its generous living space, wonderful entertainer sized terrace, leafy parkland outlook as well as spectacular Harbour Bridge views, you'll feel immediately welcome and right at home.

- Fabulous and private harbour outlook from all rooms
- All bedrooms and living rooms open onto terrace with views
- Main bedroom in separate wing to 2nd & 3rd bedrooms
- Separate casual and formal dining areas
- Massive entertainers' terrace with stunning views
- Open plan kitchen with Miele appliances and granite benches
- Ducted air, video intercom to apartment and parking entrance
- Secure parking for two cars and separate lock up storage cage
- Facilities include heated pool, gym, spa and sauna
- Pet friendly building surrounded by habourfront parklands

View

As advertised or by appointment

Agent

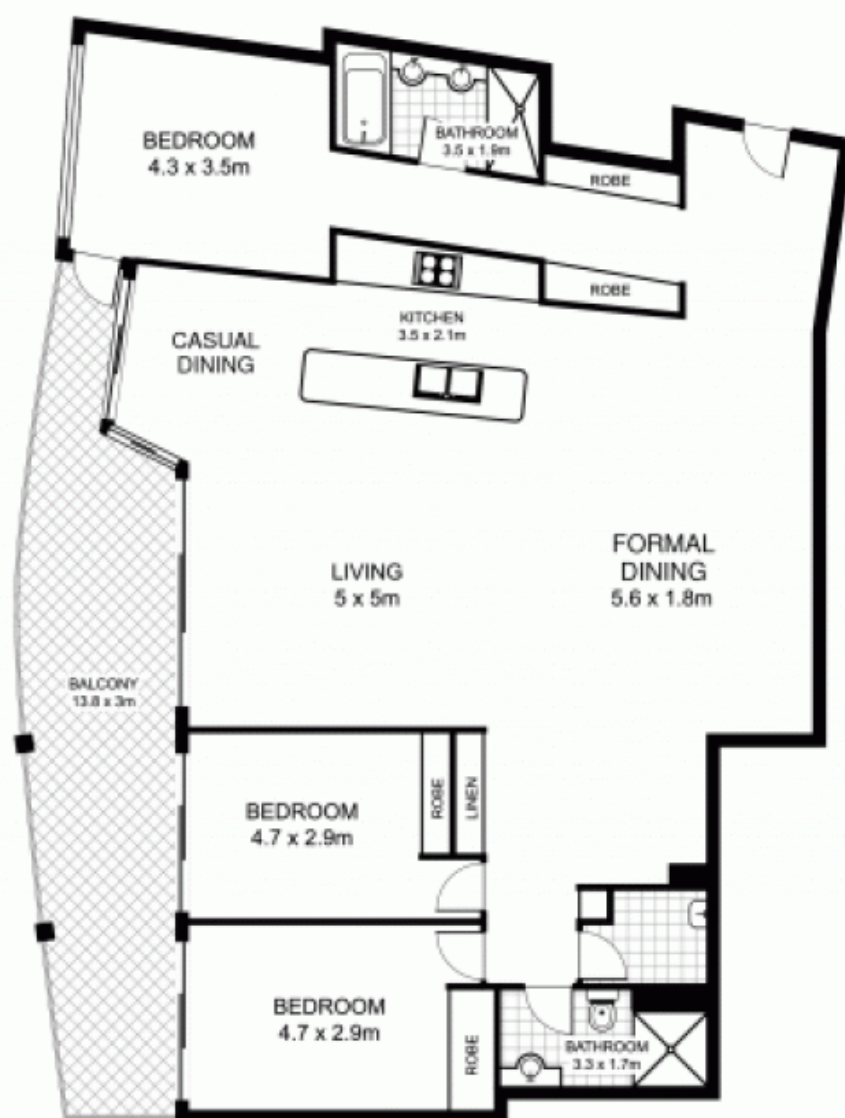
Sarah Fowell

0437 492 129

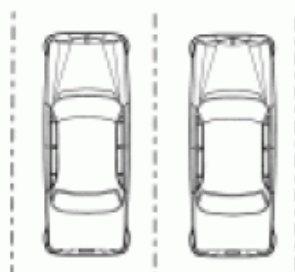
sarah@morton.com.au

morton.com.au

323/11 Pirrama Road, PYRMONT



DOUBLE CARSPACE



LOCK UP
STORAGE



This floor plan is intended as a guide only. Layout dimensions are approximate only. No representations or warranties of any nature whatsoever are given or intended. Any person using this information should rely on their own enquiries.