



morton.

PYRMONT 1003/2 Mount Street Walk

🛏 3 🚗 2 🚗 2

A unique opportunity to reside in this stunning sub-penthouse located in the heritage harbourside building, The Elizabeth. Positioned on the northeast corner and spanning the entire level, this large apartment is literally metres from the harbour's edge and offers great city, bridge and parkland views.

- Entertainer's terrace with electric sun awning
- Spaciously spread over 220 sqm
- Three large bedrooms, two full bathrooms
- Master suite with harbour views & terrace access
- Solid double brick building
- Two carspaces and large storage cage
- Large internal laundry
- Private lift foyer
- Pool, gym, tennis court & 24 hour security

View

As advertised or by appointment

Agent

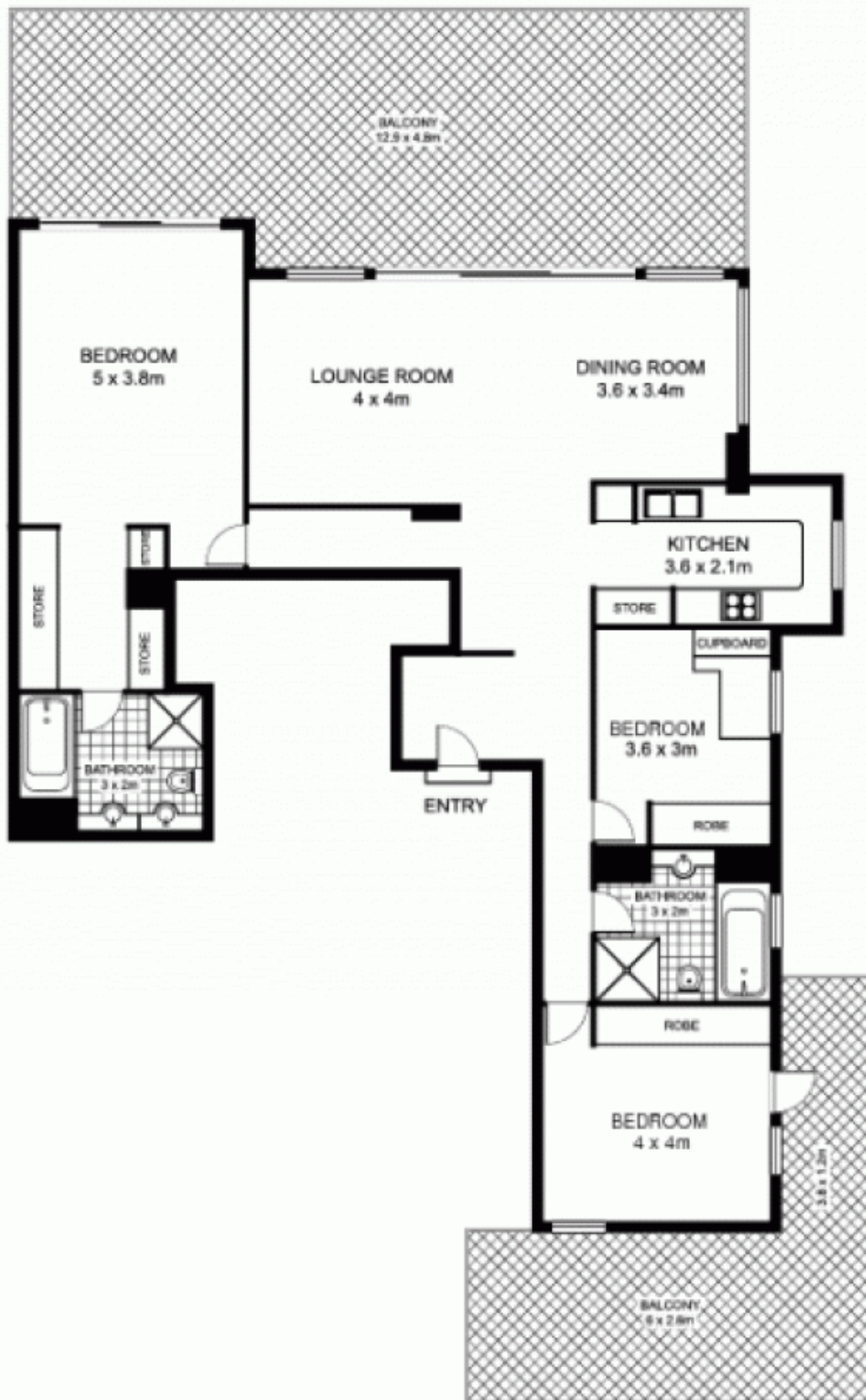
Sarah Fowell

📞 0437 492 129

✉ sarah@morton.com.au

morton.com.au

1003/2 Mount Street Walk, PYRMONT



Plans by
surroundpix
1300 30 32 40

This floor plan is intended as a guide only. Layout, dimensions are approximate only. No representations or warranties of any nature whatsoever are given or intended. Any person using this information should rely on their own enquiries