




morton.

SURRY HILLS 520 Crown Street

 4  2

Just footsteps from the burgeoning heart of Surry Hills, this grandly proportioned Victorian terrace boasts smartly refurbished interiors with scope to further enhance to your own style. Offering the quintessential inner city experience in a highly desirable and sought-after setting, it's surrounded by transport, lifestyle and entertainment options.

Open plan living and dining with original timber floors
Double sized bedrooms, master with private balcony
Sleek galley style kitchen with stainless steel appliances
Luxurious designer bathroom with stunning marble vanity
Separate ground floor residence 1 bed, 1 bath, large kitchen
One title, dual occupancy, live in and receive income, zoned 2B
Metres from local galleries, popular restaurants, bars and cafes

View

As advertised or by appointment

Agent


Sarah Fowell

 0437 492 129

 sarah@morton.com.au

morton.com.au

520 Crown St, SURRY HILLS

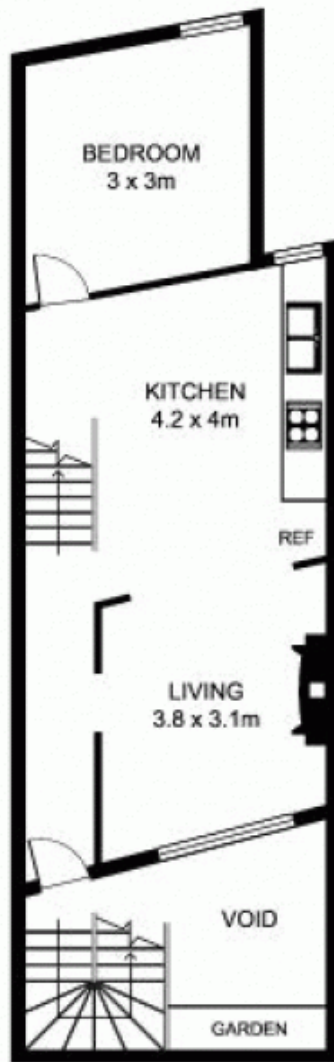
SCALE 



* note
all measurements are approximate only.
Plan is provided only as an indication of layout.



TOP FLOOR



MIDDLE



BOTTOM