



# morton.

**PYRMONT** 35/56A Pirrama Road

 3  4  2

Located literally on Sydney Harbour this luxury penthouse apartment, set across three levels, will redefine your notion of relaxed but sophisticated city living. This ultra chic address is surrounded by the harbour, enjoys uninterrupted city and Harbour Bridge views and incorporates leading edge design, superb inclusions as well as an ambience of space and luxury.

- Enormous open plan living area with Blackbutt timber floors
- Opens to vast balcony with expansive harbour / city views
- Superbly crafted stainless kitchen with island bench
- Big screen surround sound projection system
- Gaggenau appliances, dual sinks and wine storage
- King sized master bedroom overlooking the harbour and city
- Fitted soft close walk in-wardrobes, travertine marble ensembles
- Spacious second and third bedrooms with built-in wardrobes
- Open plan mezzanine level with access to exclusive rooftop
- Upper level internal courtyard
- C-bus lighting, automated blinds and security
- Soaring pitched ceilings, air-conditioning

[morton.com.au](http://morton.com.au)

### View

As advertised or by appointment

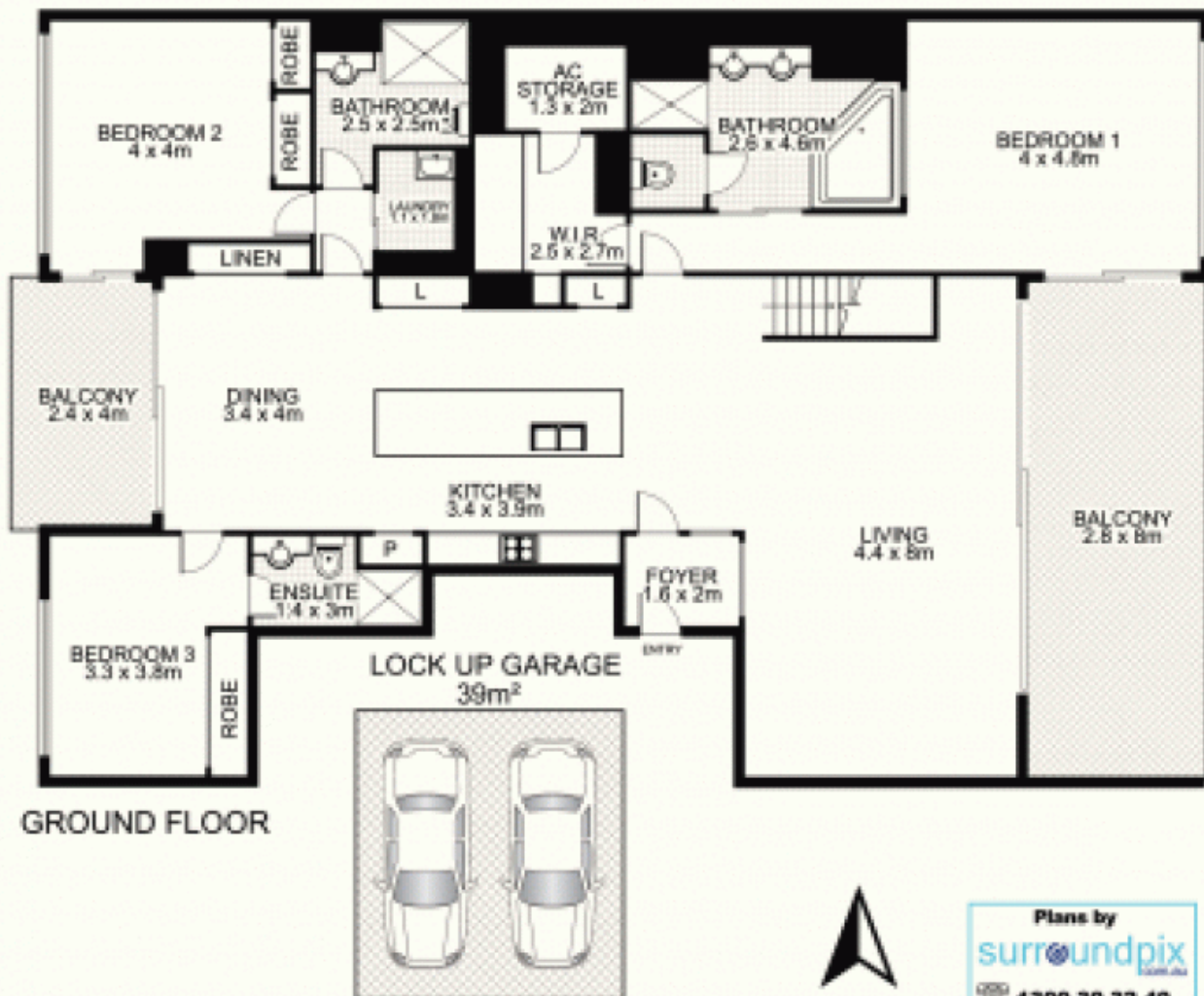
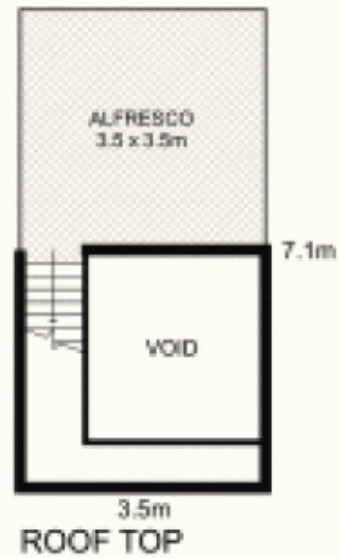
### Agent

**James Crow**

 0410 593 057

 [james@morton.com.au](mailto:james@morton.com.au)

**35/56a Pirrama Road,  
PYRMONT**



Plans by  
**surroundpix**  
1300 30 32 40

This floor plan is intended as a guide only. Layout dimensions are approximate only. No representation or warranty of any nature whatsoever is given or intended. Any person using this information should rely on their own enquiries.