



morton.

PYRMONT 5/56 Pirrama Road

 2  2  1

An executive dress circle lifestyle like no other, this flawless designer apartment is an offering of breathtaking luxury over two impressive levels. Flooded with natural light and finished to the highest of standards, tranquil and private views flow effortlessly across the Marina to Metcalfe Park.

- In a landmark harbourfront warehouse development
- Well configured to maximise both space and sunlight
- Deluxe stainless steel and CaesarStone gas kitchen
- Generous second bedroom is a perfect home office
- Secure parking, balcony, blackbutt floors, ducted air
- LED lighting, bespoke cabinetry and a storage cage
- Concierge, security and an indoor heated lap pool

View

As advertised or by appointment

Agent

James Crow

 0410 593 057

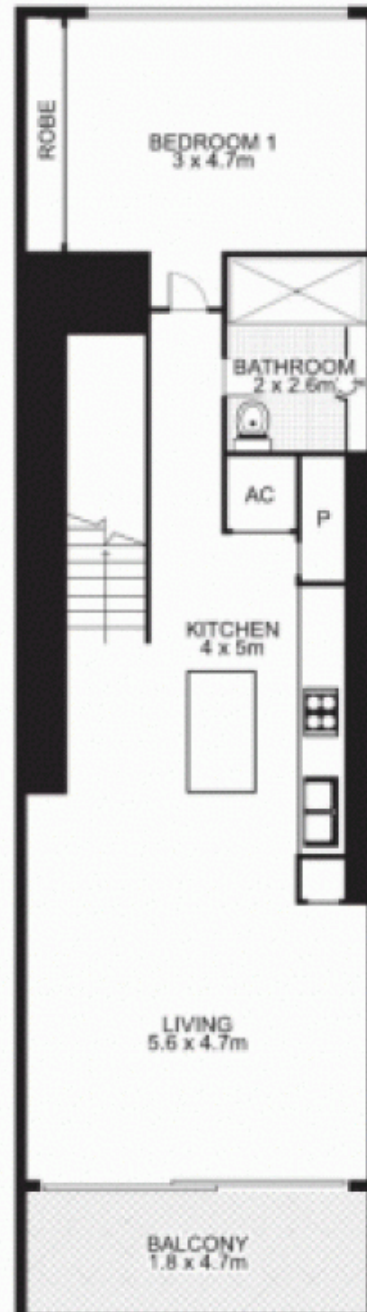
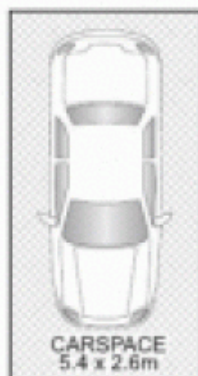
 james@morton.com.au

morton.com.au

5/56 Pirrama Road, PYRMONT



LOWER LEVEL



UPPER LEVEL



NORTH

Plans by
surroundpix
com.au
1300 30 32 40

This floor plan is intended as a guide only. Layout dimension are approximate only. No representation or warranties of any nature whatsoever are given or intended. Any person using this information should rely on their own enquiries.