



morton.

North Sydney 812/225 Pacific Highway

🏠 1 📄 1

From its sophisticated appearance and light filled architectural design, to its ultra convenient location and superb backdrop, Lucent's apartments offer an opulent yet relaxed lifestyle opportunity with lavish resort-style facilities that are second to none.

- Cleverly configured interiors maximise space
- Superb East facing views, 8th floor, lift access
- Engineered timber floors, carpet in bedroom
- Full height floor to ceiling glass windows
- Reverse cycle ducted air conditioning
- Stone bench tops, polyurethane cabinetry
- Mirrored splashbacks, European appliances
- Internal laundry, storage cage and NBN wiring
- Rooftop gardens and infinity pool with panoramic harbour views
- Gym, BBQ area and multi-use room

View

As advertised or by appointment

Agent

Sarah Fowell

📞 0437 492 129

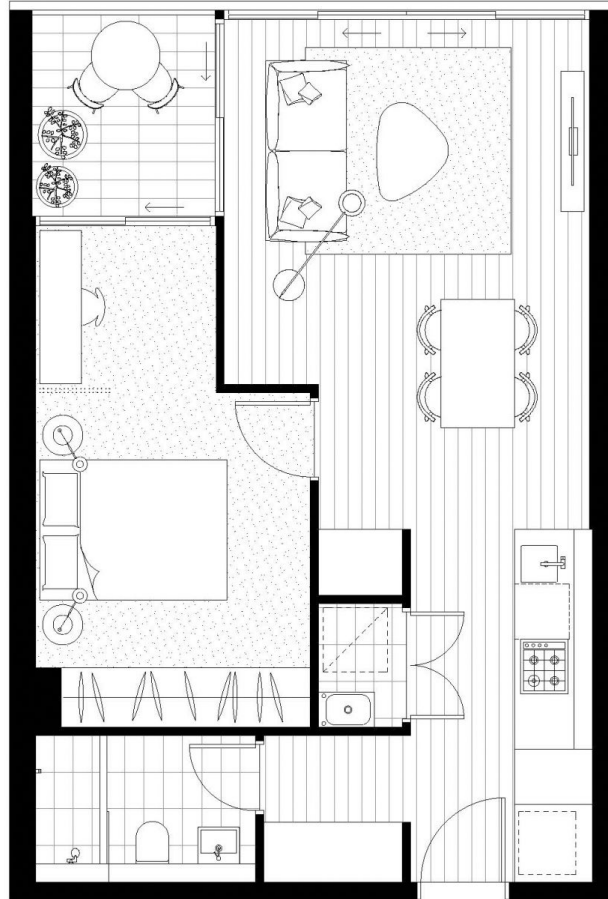
✉️ sarah@morton.com.au

morton.com.au

GREENLAND PRESENTS

LUCENT

NORTH SYDNEY



Apartment 812

Internal Area: 52sqm
External Area: 4sqm
Total Area: 56sqm

