



morton.

Wolli Creek 102/2 Chisholm Street

 3  2  2

With a superb waterfront position and views over the Cooks River, this exceptional lifestyle residence offers the ultimate city fringe living in 'Shore East' Discovery Point which is undoubtedly becoming a landmark Sydney waterfront enclave.

- Construction expected to complete approx July 2016
- Cooks River views from elevated 1st floor position
- Nestled within prime North East corner of building
- Well designed layout, emphasising space and functionality
- Premium finishes and fixtures package
- Stylish kitchens, with Smeg appliances and ducted rangehoods
- LED lighting and concealed air-conditioning throughout
- NBN, free to air and pay TV connections
- Secure building with lift access and tandem parking
- Heated indoor pool and gymnasium in building
- Exclusive residents only landscaped courtyards

View

As advertised or by appointment

Agent

Sarah Fowell

 0437 492 129

 sarah@morton.com.au

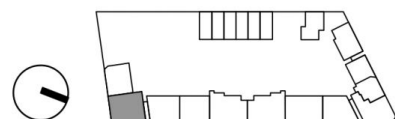
morton.com.au



SHORE - EAST
 APARTMENT: 102

LEVEL: 1
 TYPE: 3 BED, 2 BATH
 UNIT AREA (sqm)
 Internal: 100.00 m²
 Balcony: 11.00 m²
 Total: 111.00 m²

- Legend:
 P - Pantry
 S - Storage
 AC- Air Conditioning
 --- Building/ Awning over
 - - - Skylight over



Sheet Number: ME102

Revision: 6

DISCLAIMER: Please note that the layout plan was produced prior to construction. The information is believed to be correct but is not guaranteed. Changes may be made during construction and dimensions, areas, fittings, finishes and specification are subject to change without notice in accordance with the provisions of the contract for sale. The furniture and furnishings depicted are not included with any sale and purchasers must refer to their contract for sale for the list of inclusions. The position of the furniture and furnishings should not be taken to be indicative of final positions of power points, tv connection points and the like. Prospective purchasers must rely on their own enquiries. All graphics including tile layout and balustrades and the like are indicative only. NBN units and bulkheads for services are not depicted.