



morton.

LITTLE BAY 2/8 Brodie Avenue

 1  1  1

Tranquilly set amidst beautifully landscaped grounds, this exceptional north facing residence embraces a lifestyle of rare quality and enduring substance in the heart of 'Prince Henry at Little Bay'.

- Immaculately presented with the finest of finishes
- Expansive proportions and natural all day sunshine
- One of 40 apartments in the historic 'Flower Ward'
- Deep entertaining balcony, soothing sea breezes
- Deluxe CaesarStone kitchen complete with dining
- Double bedrooms with mirrored built-in wardrobes
- Grand entrance hall and magnificent 3.3m ceilings
- One common wall, security and clerestory windows
- Air conditioning, sympathetic period colour palette
- Impressive proportions, chic low maintenance living

View

As advertised or by appointment

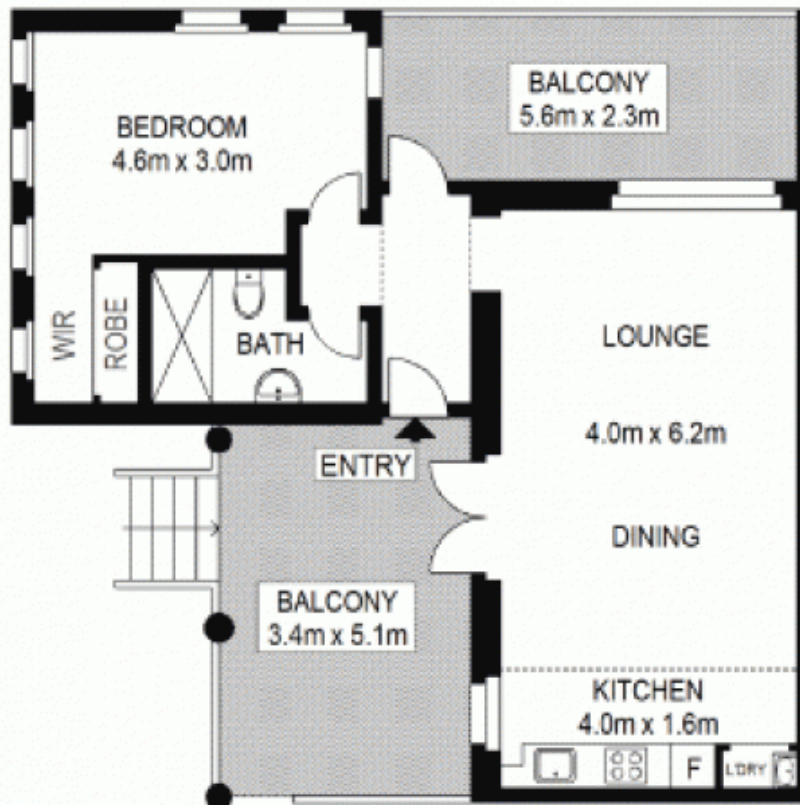
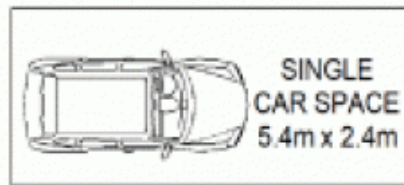
Agent

Sarah Fowell

 0437 492 129

 sarah@morton.com.au

morton.com.au



Scale shown in metres. All dimensions herein are approximate and gathered from sources believed to be reliable. Whilst every effort is made for the accuracy of our floor plans, interested parties should rely on their own enquiries. Floor Plans by Industrie Media | industriemedia.tv