



morton.

WAVERTON 10/14-16 Woolcott Street

 3  1  1

Filled with natural light and set within steps of the sweeping harbourside grounds of magnificent Waverton Park, this impressive apartment is an offering that exudes comfort and possibility. Well presented for carefree living, there is further room for personalisation to suit the needs of the modern lifestyle.

- Well proportioned with an inviting flow throughout
- Double bedrooms, master boasts mirrored built-ins
- Combined lounge and dining, entertaining balcony
- Neat kitchen, large bathroom, separate bath, shower
- Spacious garage with storage, undercover access
- Opening to enjoy tree-filled aspects on both sides
- Superb chance to re-invent as a contemporary haven

View

As advertised or by appointment

Agent

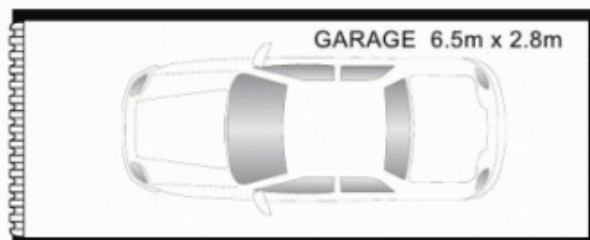
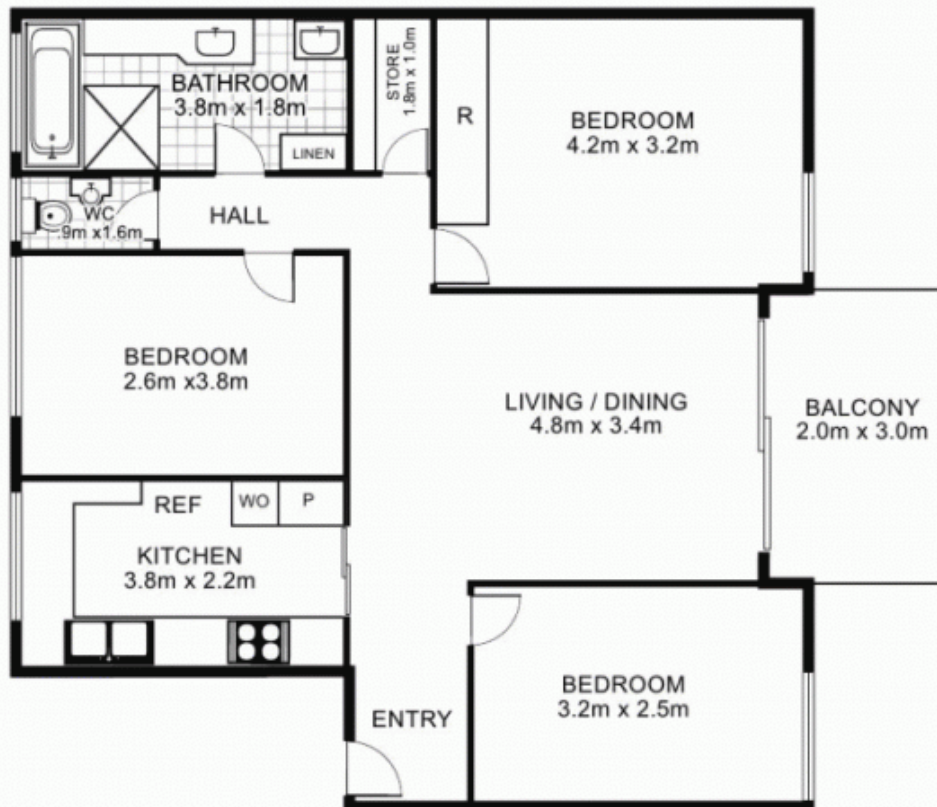
Sarah Fowell

 0437 492 129

 sarah@morton.com.au

morton.com.au

10/14 Woolcroft Street, WAVERTON



This floor plan is intended as a guide only. Layout dimension are approximate only. No representation or warranties of any nature whatsoever are given or intended. Any person using this information should rely on their own enquiries.