



# morton.

**WOLLSTONECRAFT** 9/35 Shirley Road

 2  1  1

Quietly set in a boutique block of 12 that is ideally placed no more than moments to the station, this impressively spacious 120sqm apartment enjoys a prized top floor setting. Flooded with northern light and well presented throughout, there is further scope for enhancement.

- Impressively well proportioned light-filled interiors
- Expansive open plan living with separate dining
- Generous double bedrooms both with built-ins
- Private leafy aspect, sunny entertaining terrace
- Large kitchen with stainless steel gas appliances
- Tranquil with essentially only one common wall
- Well kept communal gardens, air conditioning
- Single garage, carpeting throughout, storage

#### View

As advertised or by appointment

#### Agent

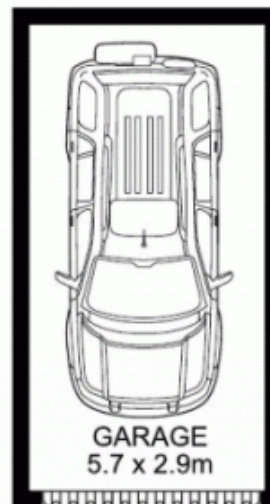
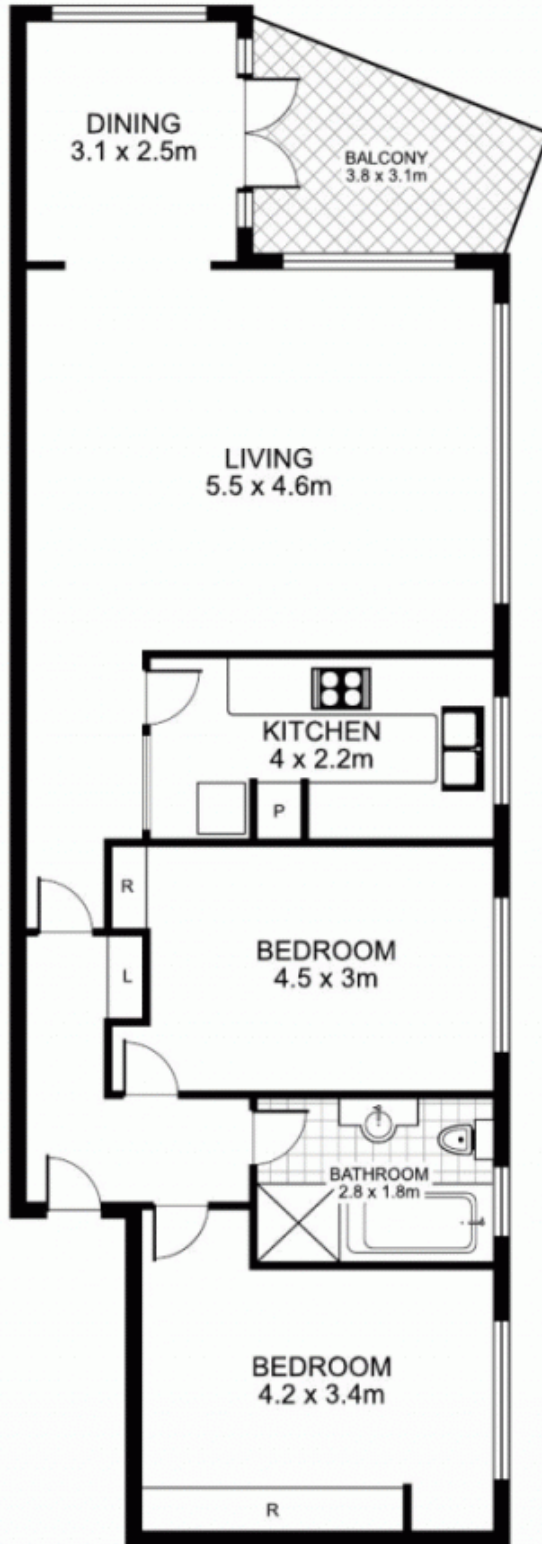
**Sarah Fowell**

 0437 492 129

 sarah@morton.com.au

[morton.com.au](http://morton.com.au)

# 9/35 Shirley Road, WOLLSTONECRAFT



Plans by  
**surroundpix**  
l.com.au  
1300 30 32 40

This floor plan is intended as a guide only. Layout dimensions are approximate only. No representations or warranties of any nature whatsoever are given or intended. Any person using this information should rely on their own enquiries