



morton.

NORTH SYDNEY 805/2-10 Mount Street

 3  2  2

This magnificent 231sqm three bedroom Penthouse features sweeping views of Sydney Harbour and out as far as the three Bridges; Sydney Harbour, Anzac & Iron Cove, towards the Blue Mountains and framed by the twilight lights of the City backdrop.

A fantastic feature of this sumptuous split level property are the two huge entertaining terraces, which are accessed by floor to ceiling glass doors from every room. Accommodation consists of three bedrooms, master on the main living level with ensuite bathroom and built-in robes, plus two additional bedrooms upstairs and second bathroom.

A brand new Caesarstone galley kitchen accentuates the light and bright apartment which includes reverse cycle air conditioning, separate laundry, bamboo flooring, new carpets, fresh paint throughout and two security car spaces.

Residents of this security building, which has several prized visitor parking spaces, enjoy exclusive use of the gymnasium

View

As advertised or by appointment

Agent

Sarah Fowell

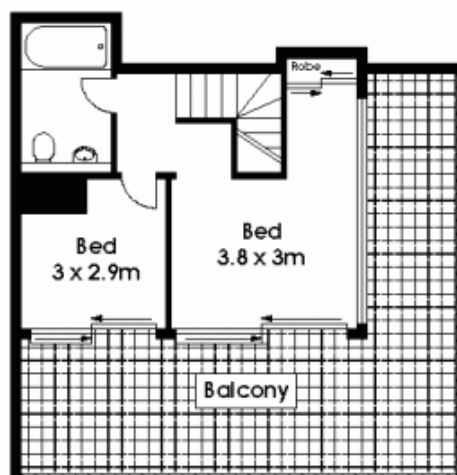
 0437 492 129

 sarah@morton.com.au

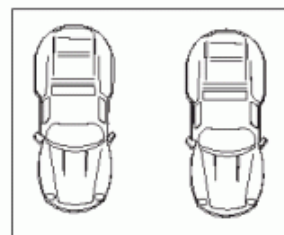
morton.com.au



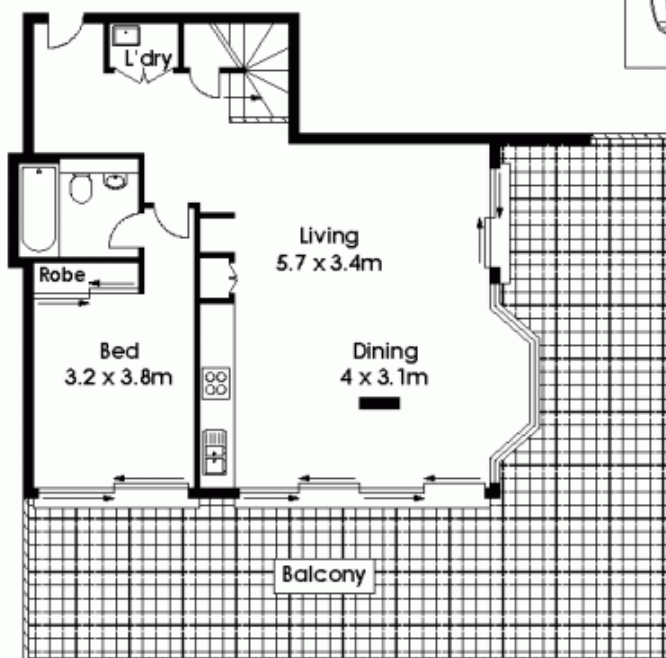
805/2-10 Mount Street, North Sydney



Upper Level



Double Car Space



Lower Level

The information above is provided in good faith and has been provide to us from a variety of sources. We have not verified whe accurate and do not have any belief one way or other in its accuracy. We do not accept any responsibility to any person for it pass it on. All interested parties should rely on their own inquiries in order to determine whether or not this information is

Floor Plan by www.squaremeter.com.au