



morton.

ARTARMON 145/421 Pacific Highway

 2  2  2

Situated on the 11th floor of the 'Northview' building, this property offers great district views and an abundance of natural light throughout. With an ample amount of storage options and access to first class fitness facilities, this apartment will appeal to home owners and investors.



- Main bedroom with ensuite and walk-in robe
- Open plan living leads to enclosed balcony
- Comfortable size kitchen with gas cook top
- Open plan lounge and dining area
- Security building with 24 hour CCTV
- Secure, tandem lock-up garage
- Secure separate storage cage
- Concealed internal laundry
- Indoor 20m pool with spa
- Large number of undercover visitor parking available

View

As advertised or by appointment

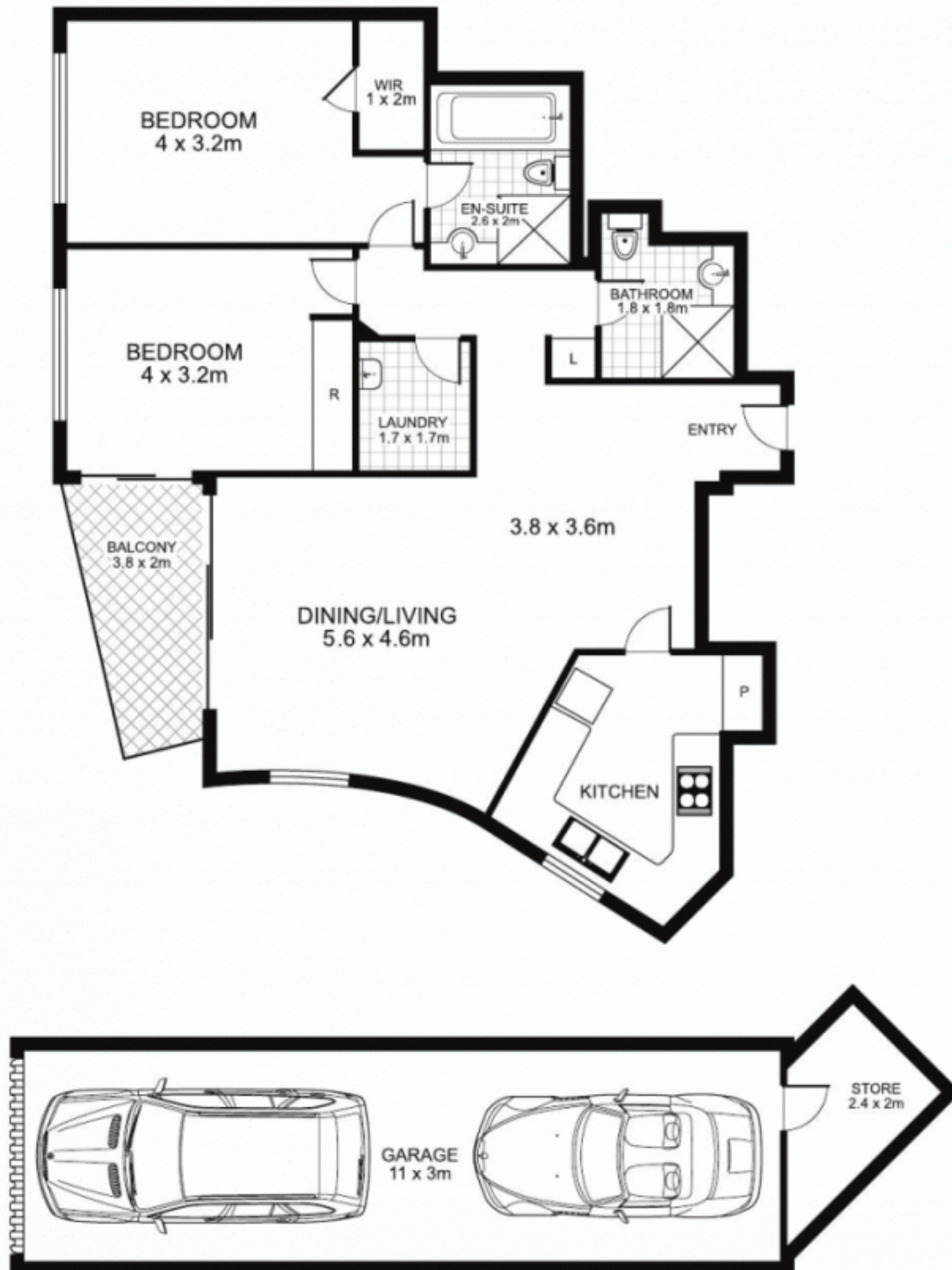
Agent

Sarah Fowell

 0437 492 129
 sarah@morton.com.au

morton.com.au

145/421 Pacific Highway, ARTARMON



This floor plan is intended as a guide only. Layout dimensions are approximate only. No representations or warranties of any nature whatsoever are given or intended. Any person using this information should rely on their own enquiries



Plans by
surroundpix
icom.au
1300 30 32 40