



morton.

MIDDLE COVE 43 Victoria Avenue

 5  3  3

Privately set well back from the street on the border of exclusive North Willoughby, this surprisingly tranquil and spacious property presents a rare opportunity indeed. Consisting of two separate residences on one generous 735m² title, this is an offering of incredible versatility and possibility.

- Awash with the light of a rear northern perspective
- Capturing sweeping district and bushland views
- Well presented with scope for further modernisation
- Potential for dual commercial/residential operation
- Chance to combine and create a single family home
- Ideally flexible teenage or in-law accommodation
- A selection of open plan lounge and dining areas
- Huge under house store a potential guest apartment
- Double bedrooms, entertaining deck, sparkling pool
- Polished floors, cathedral ceilings, air conditioning

View

As advertised or by appointment

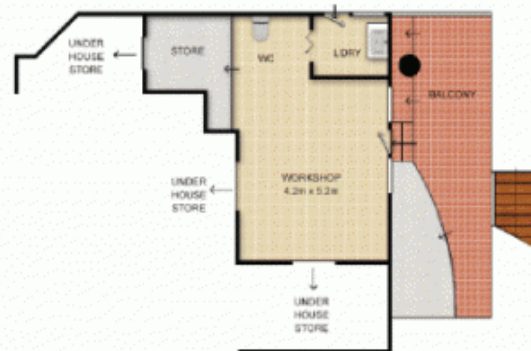
Agent

Sarah Fowell

 0437 492 129

 sarah@morton.com.au

morton.com.au



LOWER GROUND FLOOR



GROUND FLOOR



Scale shown in metres. All dimensions herein are approximate and gathered from sources believed to be reliable. Whilst every effort is made for the accuracy of our floor plans, interested parties should rely on their own enquires. Floor Plans by Industrie Media. www.industriemedia.com.au

