



morton.

ARTARMON 22/11 Hampden Road

 2  1  1

Set well back from the street in a coveted top floor position, this impressive residence defines carefree modern living. Capturing leafy views and an aspect that ensures the home is bathed in afternoon light, it is just a short stroll to the cafes, transport and shopping conveniences of Artarmon.

- Invitingly well presented with understated finishes
- Surprisingly quiet interiors offer a life of serenity
- In the prized Artarmon Public School catchment
- Generous open plan combined lounge and dining
- Welcoming double bedrooms with built-in wardrobes
- Spacious CaesarStone kitchen has Smeg gas fittings
- Sunny barbecue balcony, rear lane parking access
- Metres to parks, no more than minutes to the city

View

As advertised or by appointment

Agent

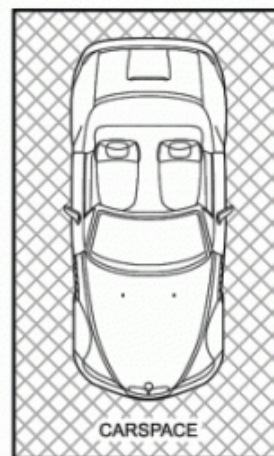
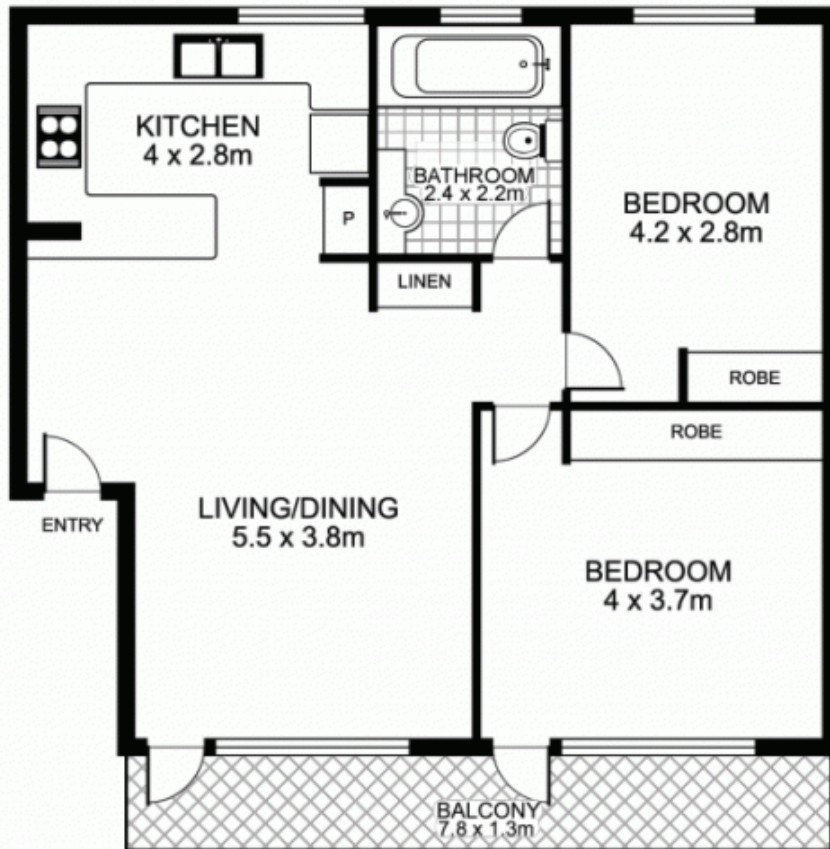
Sarah Fowell

 0437 492 129

 sarah@morton.com.au

morton.com.au

22/11 Hampden Road, ARTARMON



Plans by
surroundpix
icom.au
1300 30 32 40

This floor plan is intended as a guide only. Layout dimensions are approximate only. No representations or warranties of any nature whatsoever are given or intended. Any person using this information should rely on their own enquiries