



morton.

LITTLE BAY 5/6 Darwin Avenue

 2  1  1

Tranquilly set amidst beautifully landscaped grounds and capturing uninterrupted ocean views, this exceptional residence embraces a lifestyle of rare quality and enduring substance in the heart of 'Prince Henry at Little Bay', unquestionably Sydney's foremost oceanfront community.

- Immaculately presented with the finest of finishes
- Expansive proportions and natural all day sunshine
- One of ten apartments in the historic 'Flower Ward'
- Deep entertaining balcony, soothing sea breezes
- Deluxe CaesarStone kitchen complete with dining
- Double bedrooms with mirrored built-in wardrobes
- Grand entrance hall and magnificent 3.3m ceilings
- One common wall, security and clerestory windows
- Air conditioning, sympathetic period colour palette
- Impressive proportions, chic low maintenance living

View

As advertised or by appointment

Agent

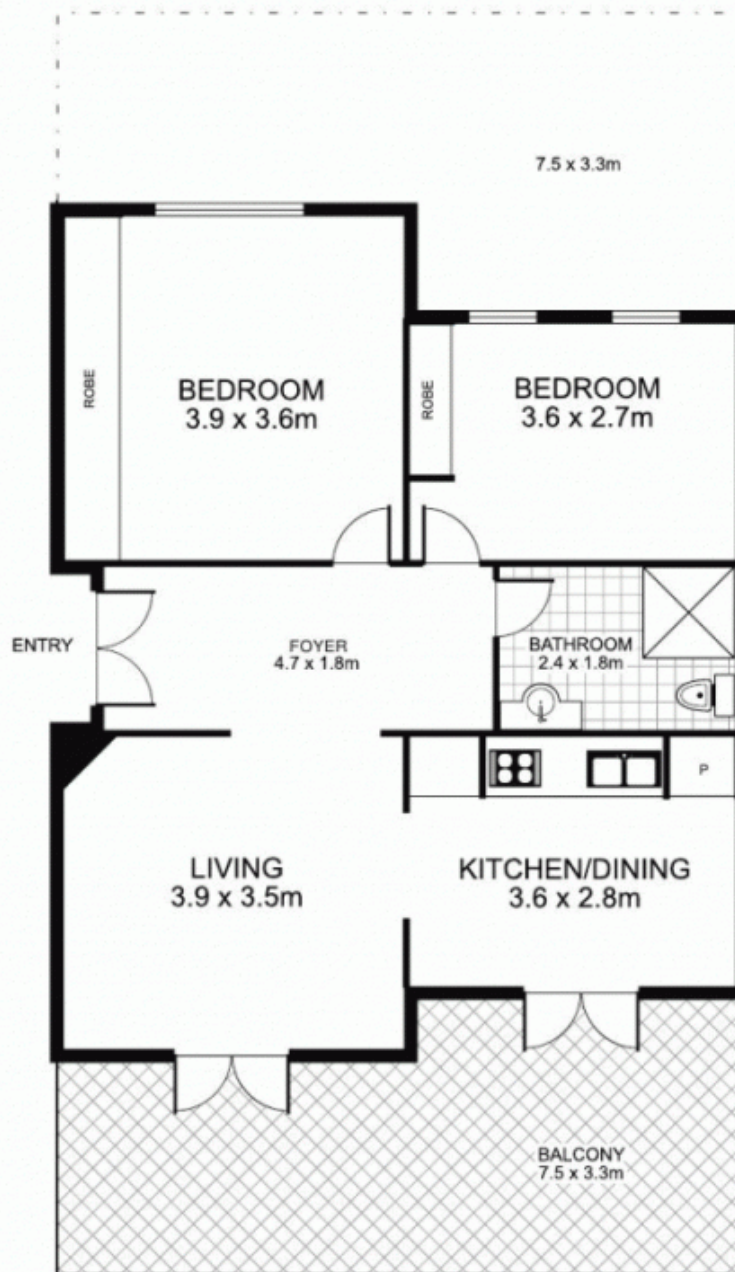
Sarah Fowell

 0437 492 129

 sarah@morton.com.au

morton.com.au

5/6 Darwin Avenue, LITTLE BAY



Plans by
surroundpix
lcm.au
1300 30 32 40

This floor plan is intended as a guide only. Layout dimensions are approximate only. No representations or warranties of any nature whatsoever are given or intended. Any person using this information should rely on their own enquiries