



morton.

GORDON 46 Nelson Street

 4  3  3

View

As advertised or by appointment

Agent

Sarah Fowell

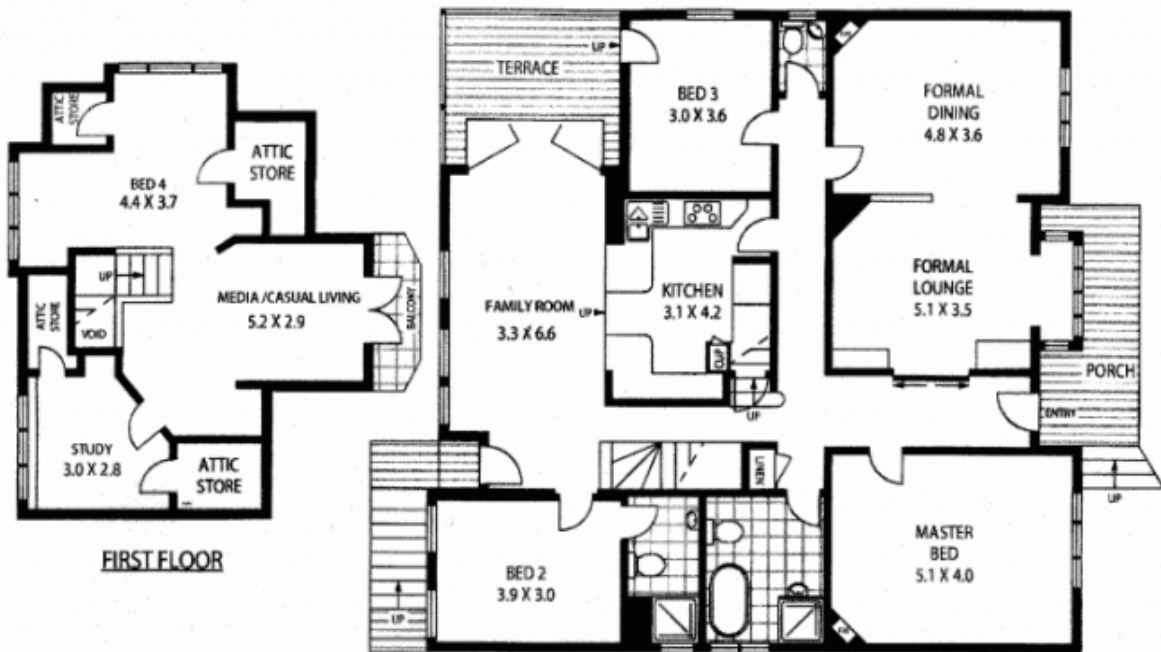
 0437 492 129

 sarah@morton.com.au

Built in the 1920s is this elegant Federation home with charming street appeal and stunning traditional features. Set on 1092 square metres in a peaceful north to rear position with easy care grounds, this generously proportioned home offers spacious formal and informal living areas to suit the most discerning of buyers.

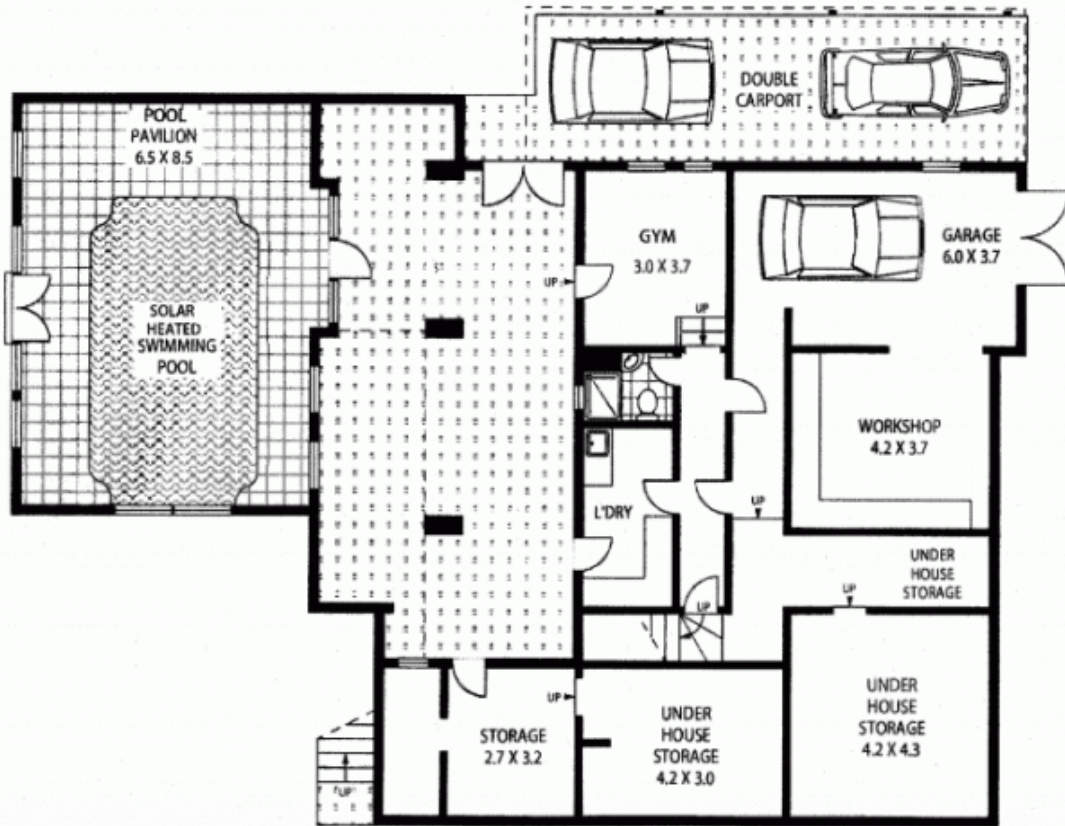
- Character filled formal lounge/dining room with period features
- Granite kitchen flows to family room and covered terrace
- Four bedrooms, study and ample storage throughout
- Family room, media space and gymnasium
- Manicured gardens, indoor solar heated pool and double carport

morton.com.au



FIRST FLOOR

GROUND FLOOR



LOWER GROUND FLOOR



46 NELSON STREET

GORDON

APPROX: INTERNAL AREA : - 313 SQM
 APPROX : EXTERNAL AREA : - 205 SQM
 APPROX: TOTAL AREA : - 518 SQM

Floor Plan Disclaimer: Mind the Gap (mtg) floor plans / site plans are intended as an approximate guide only. No representations or warranties of any nature are given or intended and any person using this information other than as a guide should always rely on their own enquiries. mtg property marketing services - 1300 133 145 - photography, floor plans, copywriting, video, design, projects - www.mindthegap.com.au