



# morton.

**ST LEONARDS** 910/1 Sergeants Lane

 1  1  1

This is a view you can't wait to come home to. And with a direct connection to St Leonards Station, you'll never have to wait long to come home. Enjoying panoramic northern views from its convenient Forum Tower address, this is a wise choice, whether you're planning to live or invest.

- Contemporary Forum Tower balcony apartment
- Due north aspect 180 degree panoramic views
- Open plan living flows to large covered balcony
- Open granite gas kitchen, Smeg appliances
- New combined fan forced oven and microwave
- Updated customised builtins and entertainment unit
- Floating floorboards throughout apartment
- Generous bedroom opening to balcony views
- Bathroom/laundry with dryer and granite vanity
- Extra large lock-up garage with storage space
- Security building with pool, spa, gym, concierge
- Direct access to Forum restaurants, cafes, rail

From the concierge desk in a stylish lobby, it's only metres to

[morton.com.au](http://morton.com.au)

### View

As advertised or by appointment

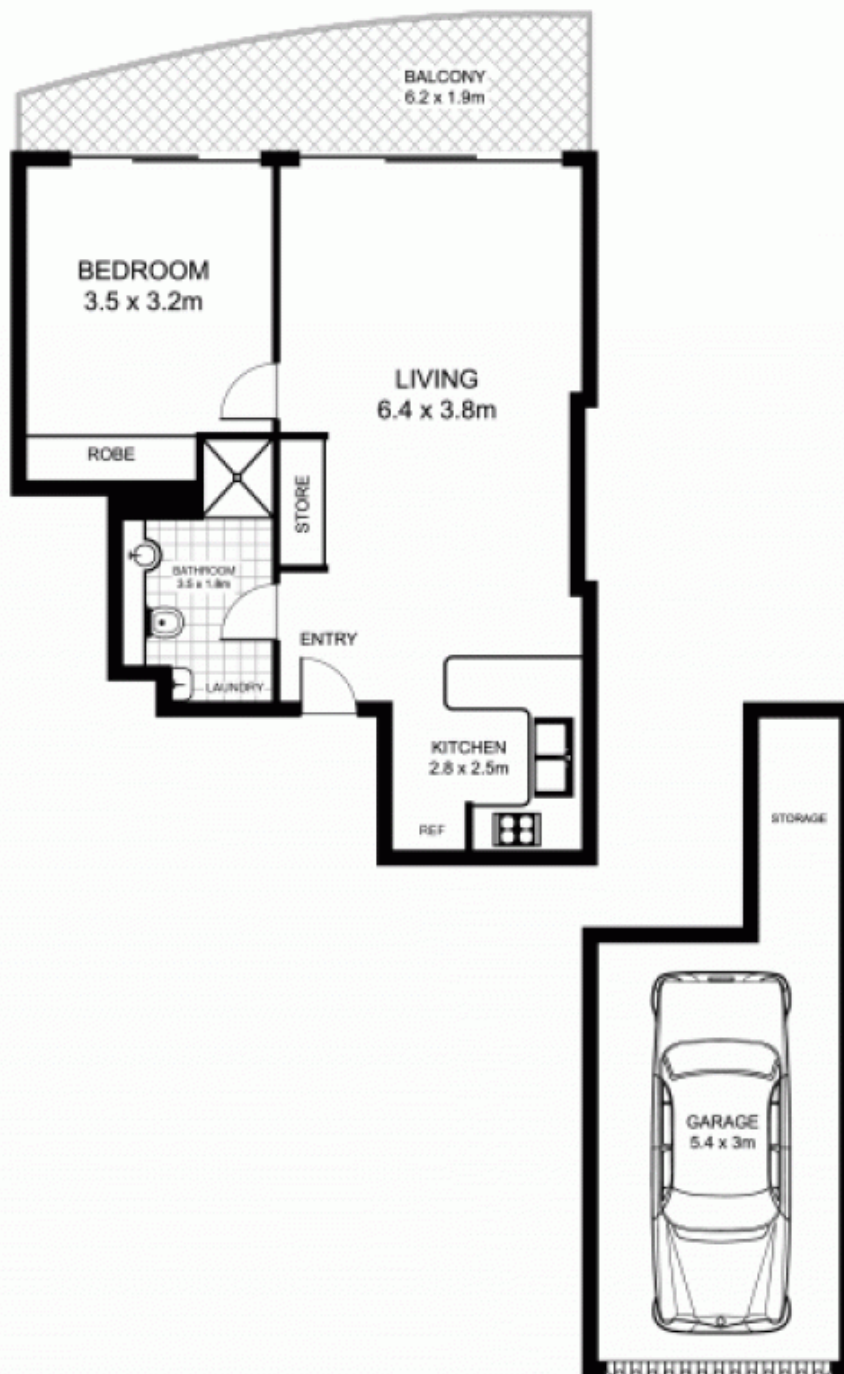
### Agent

**Sarah Fowell**

 0437 492 129

 [sarah@morton.com.au](mailto:sarah@morton.com.au)

# 910/1 Sargeants Lane, ST LEONARDS



This floor plan is intended as a guide only. Layout dimensions are approximate only. No representations or warranties of any nature whatsoever are given or intended. Any person using this information should rely on their own enquiries