



morton.

EPPING 10/42 Kent Street

 2  1  1

View

As advertised or by appointment

Agent

Sarah Fowell

 0437 492 129

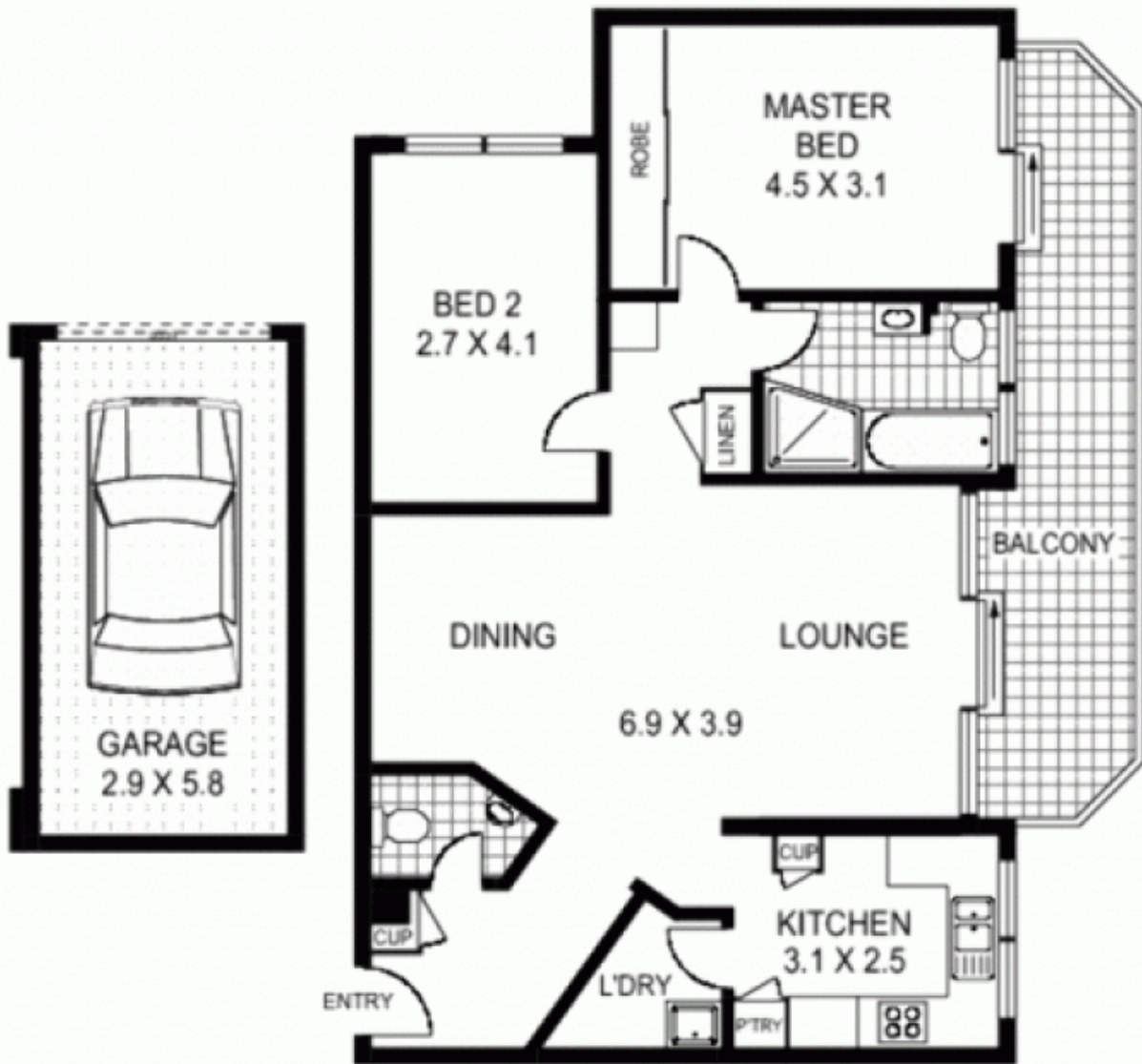
 sarah@morton.com.au

Tucked away in the secure 'Bay Tree Court' building at the rear of the sought-after 'Boronia Gardens', this top floor apartment offers light filled interiors with scope to add value. Comfortable and well maintained by the sole owner-occupier, the property will be easily transformed by some simple renovations and contemporary finishes.

An exciting opportunity for first-time buyers looking to dip a toe in the water or astute investors keen to add to their portfolio, it's in an idyllic parkside locale just a few minutes stroll from Epping rail and bus transport, shops and amenities.

- Generous living and dining flows outside via wide glass doors
- Full length balcony for relaxed alfresco living and barbeques
- Original kitchen in good condition and separate internal laundry
- Master bedroom with built-ins and balcony access
- Guest w/c and hall storage
- Bathroom with separate tub and oversized shower

morton.com.au



APPROX : GROSS INTERNAL AREA :- 82 SQM

10/42-44 KENT STREET

EPPING

Floor Plan Disclaimer: Mind the Gap (mtg) floor plans / site plans are intended as a guide only. No representations or warranties of any nature whatsoever are given or intended and any person using this information should always rely on their own enquiries. mtg property marketing services - 1300 133 145 - photography, floor plans, virtual tours, video tours, copywriting, project marketing - www.mindthegap.com.au