



morton.

Rushcutters Bay 15/20 McLachlan Avenue



ADVANXeast will put you right at home in the heart of Rushcutters Bay. Each apartment has been designed to fit you and your modern lifestyle. Devised by Lindsay Bennelong Developments and an innovative team of planners, designers and architects, ADVANXeast is the next stage in transforming this much sought-after location into a vibrant inner-city hub. This 59sqm studio features a balcony with a NW aspect. Designed for daily living with a minimum of fuss, but still with ample room and storage. The galley kitchen is a feature with functional laundry & stylish bathroom.

- Air conditioning and quality appliances
- Dimmable recessed low voltage downlights
- Energy efficient hot water
- Video intercom security
- Wool rich carpets
- Flexible communications
- Due for completion at the end of July 2015

View

As advertised or by appointment

Agent

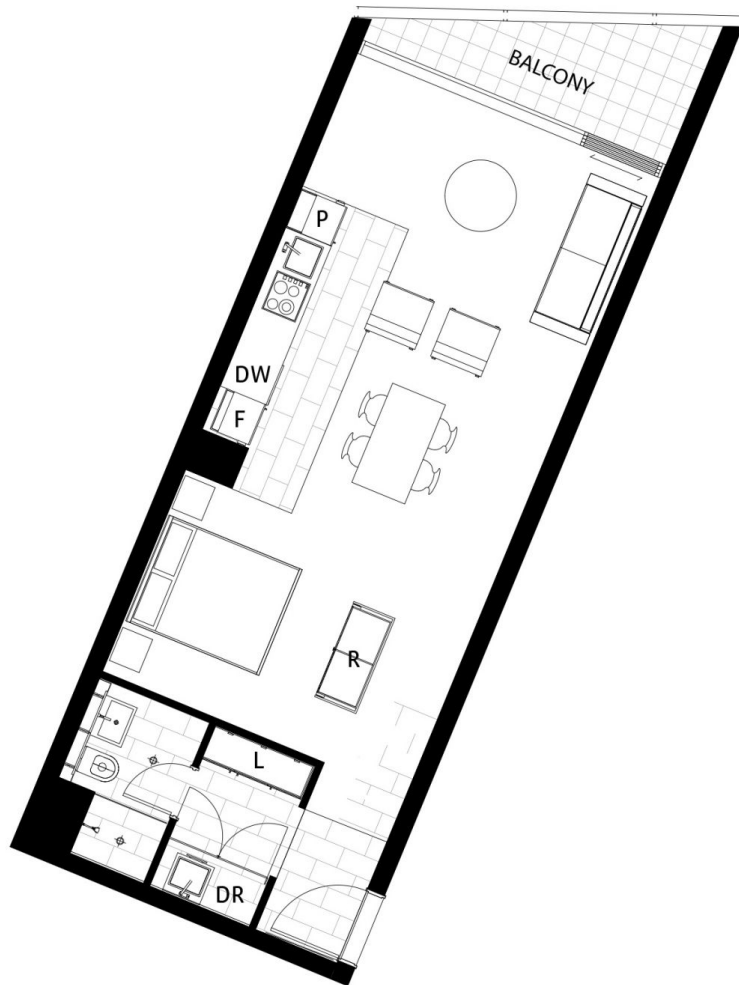
Sarah Fowell

☎ 0437 492 129

✉ sarah@morton.com.au

morton.com.au

Level 1 Apartment 15



studio **1 bathroom**

Internal:	52.5m ²
Balcony:	6.0m ²
Storage:	2.6m ²
Total:	61.1m ²
Parking:	0



DISCLAIMER: Please note that this floor plan was produced prior to completion. The information, while correct is not guaranteed. All dimensions and areas are approximate. In accordance with the Contract for Sale changes without notice may be made during construction. No furniture is included with any sale. All areas are approximate and are measured to the centre of party walls. Areas may vary from final strata areas. All dimensions are approximate. 009032