



morton.

Glenmore Park 1/44 Luttrell Street

 3  1  1

A fantastic opportunity to purchase this three bedroom townhouse, ideal for the first home buyer, those looking to downsize or a smart investment ideally located within walking distance of local schools, public transport and the "Town Centre".

- Large sunny courtyard with beautifully grassed play area
- Highset with views to the Blue Mountains
- Open plan tiled living area
- Three good size bedrooms, all with built-ins
- Split system air conditioning
- Family bathroom with bath with 2nd toilet
- Garage with automatic door
- Small complex of only 6 townhouses

View

As advertised or by appointment

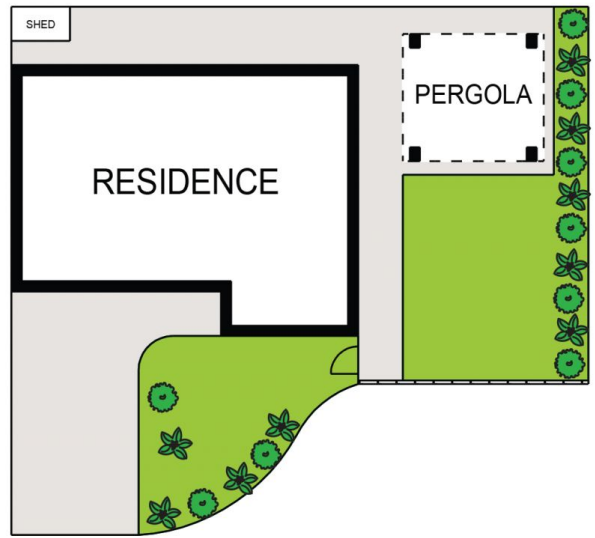
Agent

Ian Ahearn

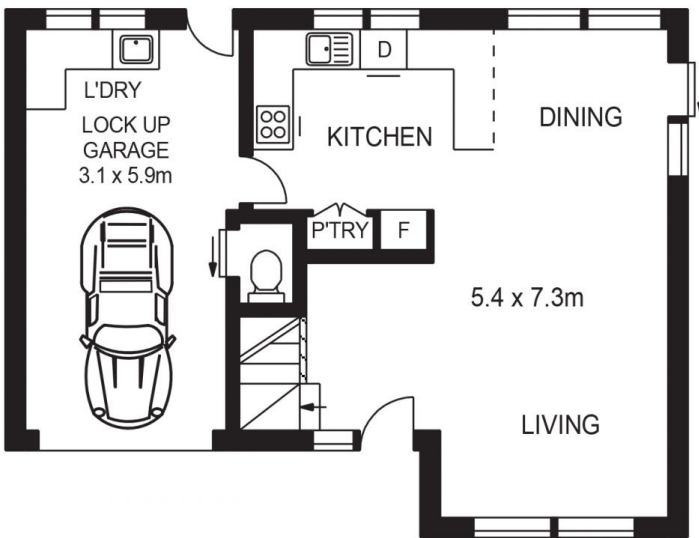
 0457 483 610

 ian.ahearn@morton.com.au

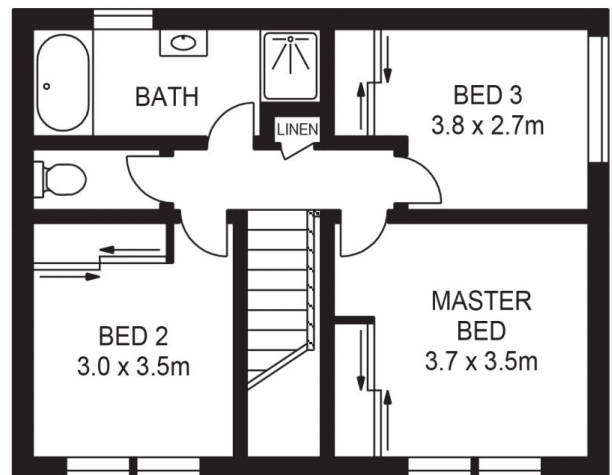
morton.com.au



SITE PLAN



GROUND FLOOR



FIRST FLOOR

APPROX. INT. AREA : 115m²
 APPROX. LAND. AREA : 219m²

1/44-46 LUTTRELL STREET, GLENMORE PARK



www.assetphotographers.com.au

Please note these measurements are approximate only. The plans are intended as a rough guide for illustrative purposes. It is not warranted or guaranteed to be correct nor is it a part of the sale or rental contract.

