



morton.

Macquarie Park F03/13 Halifax Street

 2  2  1

Great opportunity to lease this modern two-bedroom apartment located in Nexus building, NBH at Lachlan's Line. This iconic development perfectly positioned above a bustling town square at the heart of the new Lachlan's Line master plan.

- Generous open plan lounge, plenty of storage space
- Quality designer kitchen with island bench and Miele appliances
- Good sized bedrooms with built-in robe, abundance of natural light
- Large entertainer's balcony off lounge and bedroom
- Sleek bathroom has floor to ceiling tiles, mirrored vanity cabinets
- One car space and storage cage, security access
- Video intercom, laundry with dryer, air-conditioning, NBN internet
- Lush landscaped gardens, pool, gym & BBQ, onsite building manager-
- Pets considered upon application

morton.com.au

View

As advertised or by appointment

Agent

Sandy Shen

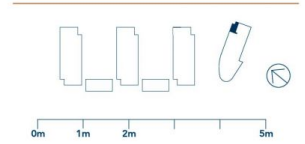
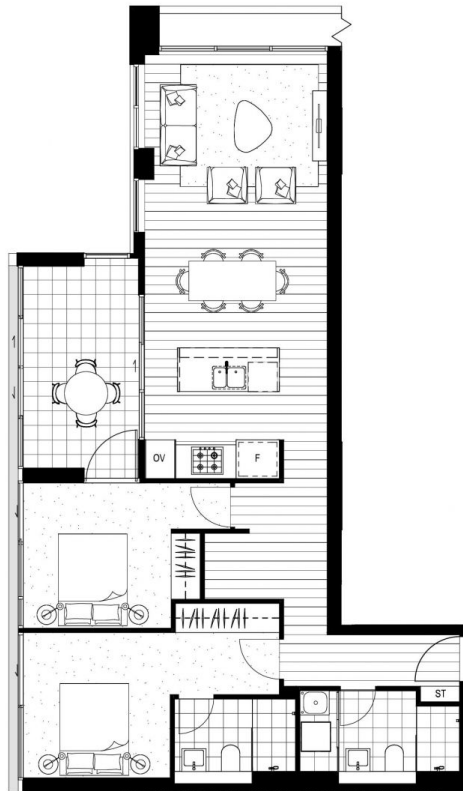
 0410 593 246

 sandy.shen@morton.com.au



2B.12_B	
Internal Area	74-78m ²
External Area	9-11m ²
Total Area	83-89m ²

NEXUS
11.03, 12.03, 13.03, 15.03, 16.03, 17.03



NBHSYDNEY.COM 1800 388 788

REV D_01.06.18

Refer to General Arrangement Plans for specific unit locations, orientation and context. Note that all graphics including balustrades, glazing units, door units and the like should be taken to be indicative only. Window locations and operable window and door units are shown as indicative only and are subject to change. Ducts and air-conditioning units and their locations are shown as minimal and are subject to change. Floor plans are at an unspecified scale. All internal and external areas and sizes are indicated as approximate only and are subject to final strata survey. *Varies - possible window position for each individually listed unit only. Refer to the General Arrangement Plans for exact window and door positions for each individual unit. Please note that this floor plan was produced prior to construction. The information here is believed to be correct but is not guaranteed. Changes may be made during construction and dimensions, areas, fittings and specification are subject to change without notice in accordance with the provisions of the contract for sale. The furniture and furnishings depicted are not included with sale and purchases must refer to the contract for sale for a list of inclusions. The position of furniture and furnishings should not be taken to be indicative of final positions of power points, TV connection points and the like. Prospective purchasers must rely on their own enquiries. Balustrades for services are not depicted.