



morton.

Wentworth Point 140/27 Bennelong Parkway

 2  2  1

Well positioned in the Spinnaker building of the Mariners Cove complex, this well maintained two bedroom apartment has an abundance of natural light from its North-facing aspect. Sitting right above the Parramatta River with relaxing water views, you'll be residing in the perfect sanctuary while still conveniently located for all work and lifestyle needs. This apartment comes fully furnished, ready for you to simply move in and enjoy.

Features:

- Northerly orientation
- Entertainer's balcony with water views and over 20sqm of space
- Main bedroom with en-suite
- Air-conditioning in both bedrooms
- Balcony access from all bedrooms and living areas
- Fully equipped kitchen
- Secure basement car parking
- Residents only access to private beach, pool, gym, and

morton.com.au

View

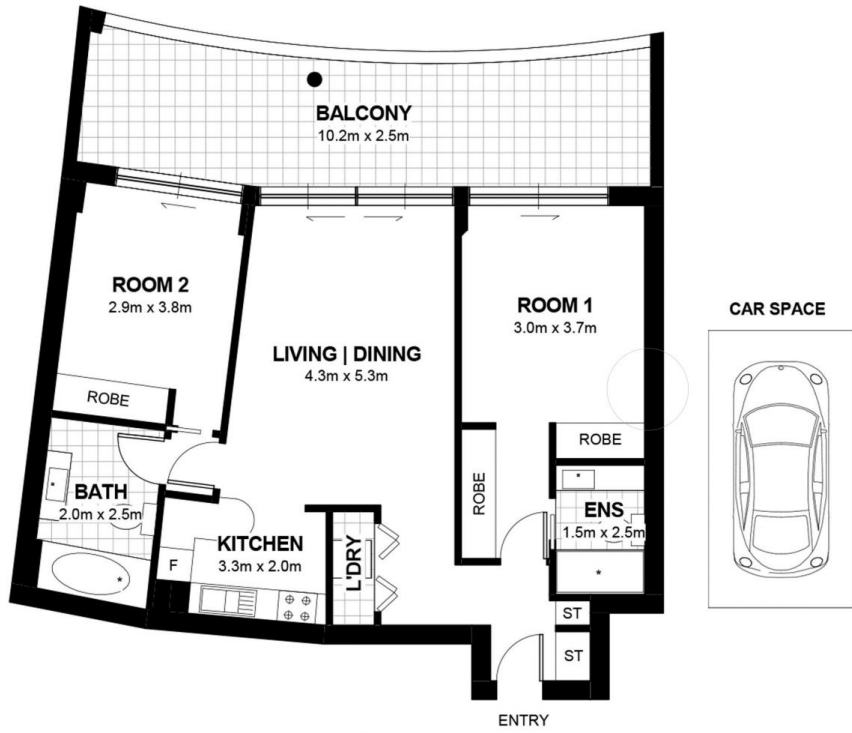
As advertised or by appointment

Agent

Sarah Fowell

 0437 492 129

 rentals@morton.com.au



WENTWORTH POINT

27 BENNELONG PARKWAY

DISCLAIMER: The information contained are approximates and are for illustrative/marketing purposes only. They do not form part of the contract for sale and prospective purchasers need to make their own independent enquiries. The agent does not guarantee the accuracy of the information.