





# morton.

**Potts Point** 209/18 Bayswater Road

 1  1

This over-sized 48sqm studio retains all the original period details, sleek design and 3 metre ceilings. Bathed in sunlight, this perfect pied-a-terre is a rare offering.

- Open plan living and dining
- Recessed bedroom area
- Generous storage, timber floors
- Sleek galley kitchen, air-con
- Internal laundry with washer and dryer
- Luxurious bathroom, top end finishes
- Balcony with wrought iron and Corinthian columns
- Communal rooftop with amazing bridge and city skyline views

### View

As advertised or by appointment

### Agents

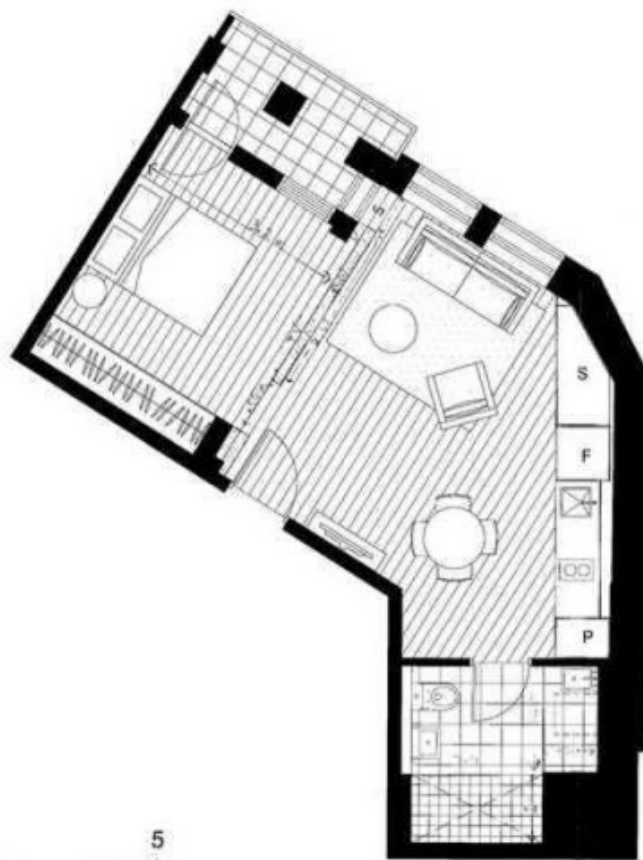
#### Noel Jenkins

 0410 593 694  
 noel@morton.com.au

#### Natasha Giannone

 0438 683 859  
 natasha@morton.com.au

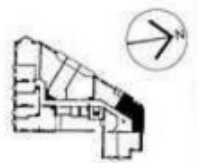
[morton.com.au](http://morton.com.au)



**MANOR**  
POTTS POINT

LEVEL 2  
APARTMENT 209  
STUDIO

INTERNAL AREA	45m <sup>2</sup>
EXTERNAL AREA	3m <sup>2</sup>
TOTAL AREA	48m <sup>2</sup>



0 1 2 5

May 15 1. To be used after consultation with the architect. 2. The information is for general information only. 3. Changes may be made during construction and dimensions, areas, fittings, fixtures and appliances may vary to comply with the provisions of the contract for sale. 4. The fittings and fixtures depicted in this plan are not shown in the contract for sale. 5. The position of the furniture and fittings shown in this plan is for illustrative purposes only and is not intended to represent the actual position of the furniture and fittings. 6. All graphics including the layout, dimensions and the site are not to scale. 7. All furniture shown is not shown in scale.