



**morton.**

**Pyrmont** 401/24 Refinery Drive

 2  2  1

Offering a waterfront lifestyle of unmatched pedigree, this flawless elevated residence is surrounded by luscious gardens and exudes an unquestionable sense of elegance and quality.

- Beautifully refurbished with the finest of appointments
- Sensational waterfront locale metres to the harbour's edge
- Designed with effortless indoor/outdoor entertaining in mind
- Privacy and peace assured, one neighbour, no street noise
- Generous master with walk-in, ensuite and harbour outlook
- Deluxe contemporary bathrooms, storeroom
- Chic CaesarStone functional gas kitchen, ample storage
- A superb and peaceful 'winter garden' with BBQ gas points
- Italian porcelain floor tiles, separate laundry, ducted air con
- With access to two pools, spa, gym and two tennis courts
- A truly magnificent waterfront estate that is pet friendly

#### View


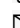
As advertised or by appointment

#### Agents

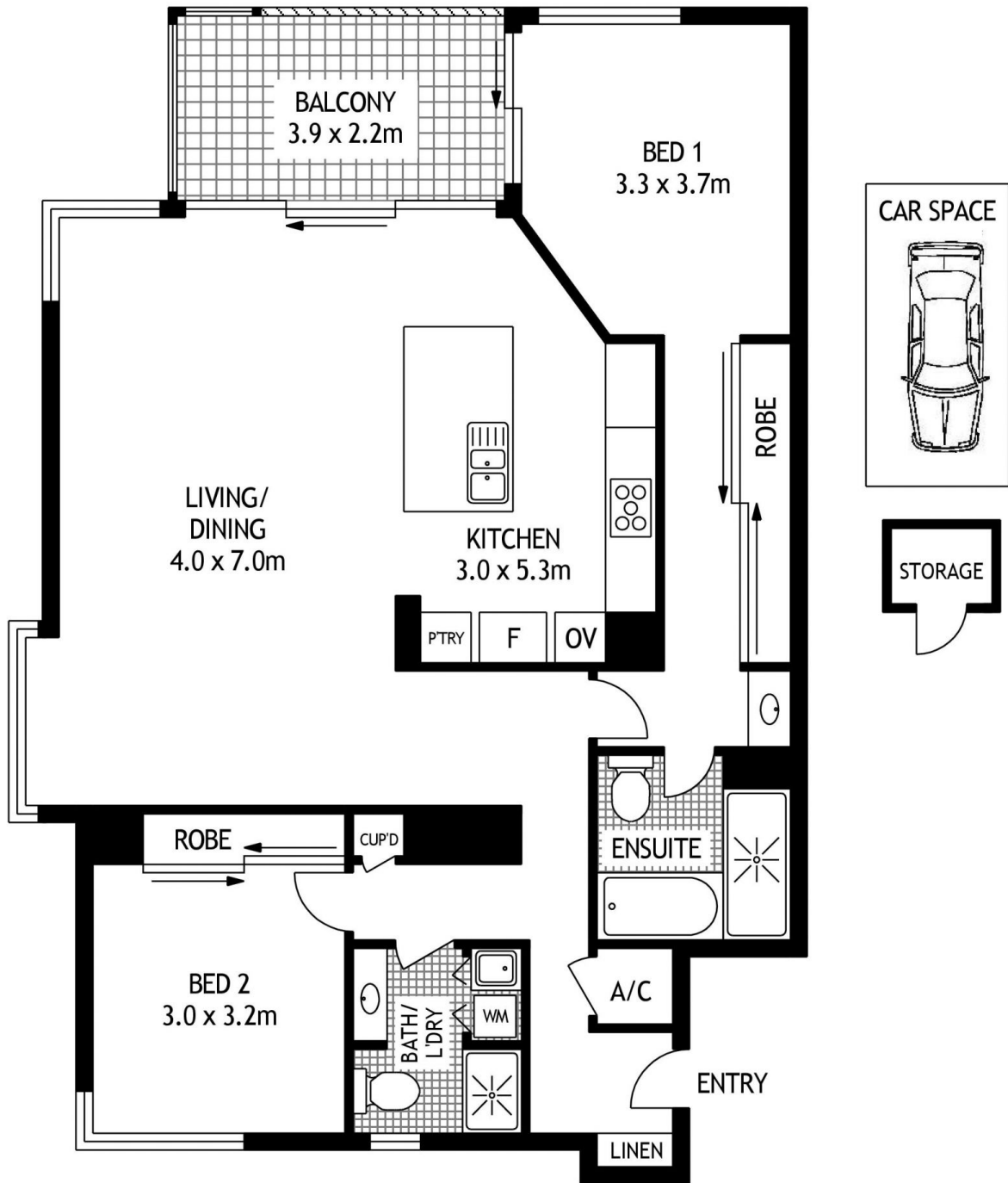
##### Ian Qiu

 0447 696 425  
 [ian@morton.com.au](mailto:ian@morton.com.au)

##### Natasha Giannone

 0438 683 859  
 [natasha@morton.com.au](mailto:natasha@morton.com.au)

[morton.com.au](http://morton.com.au)



401/24 REFINERY DRIVE

PYRMONT

SCAPE Floor Planing Disclaimer: This floor plan is conceptual only. It is provided for illustrative purposes only and should not be relied upon. We make no guarantees to the correctness of this plan. All interested parties should make and rely on their own enquiries in determining the accuracy of the information contained in this floor plan.