



# morton.

**Zetland** 909/2 Ebsworth Street

 2  1

Sold by Calvin Chan 0406 888 028

From its elevated position in Mirvac's iconic Ovo tower, this sleek designer apartment captures a spectacular urban view over the surrounding rooftops. It provides a quiet retreat complemented by a location that's at the very heart of all the attractions that make Zetland such a fast-growing lifestyle destination.

- Bright interiors feature a generous open living and dining space
- A wide sheltered balcony that captures a sweeping panorama
- Two double bedrooms are both fitted with built-in wardrobes
- A quality modern kitchen fitted with sleek gas appliances
- Ducted air conditioning, intercom and security lift access
- Walking distance to nearby Victoria Park and East Village

### View

As advertised or by appointment

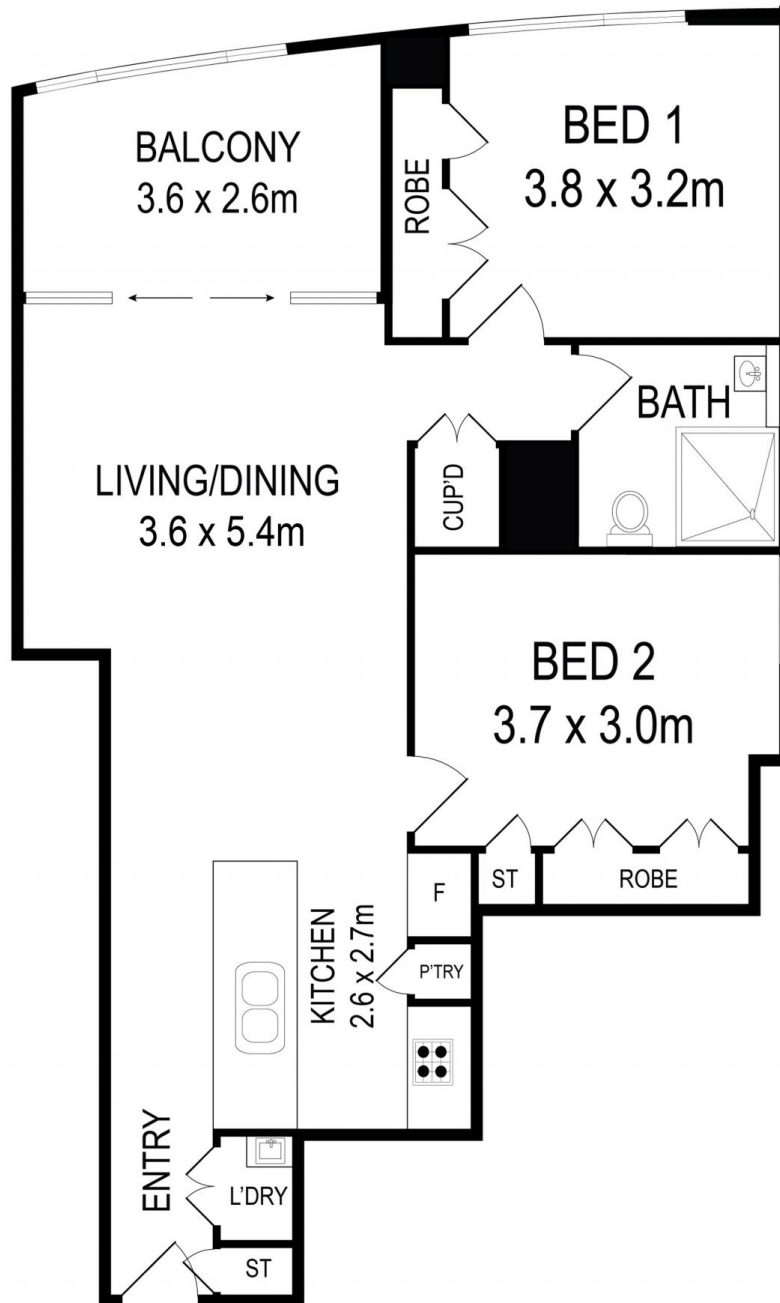
### Agent

**Calvin Chan**

 0406 888 028

 calvin@morton.com.au

[morton.com.au](http://morton.com.au)



All information contained herein is gathered from all sources we believe reliable. However we cannot guarantee its accuracy and interested parties should rely on their own enquiries.



CampaignPROS

**morton.** Zetland 909/2 Ebsworth Street