



morton.

Zetland 4c Wolseley Grove

 3  3  2

Tastefully presented, this modern townhouse over three levels is centrally located in the ever popular Victoria Park. Spacious open plan living flows seamlessly to the huge entertainer's terrace which is ideal for inner city living. The master bedroom features a huge walk-in robe and a full sized en suite. With an internal laundry and two security parking spaces, this apartment has everything your heart desires.

- Three double bedrooms with robes
- Modern open plan kitchen with gas cooking & dishwasher
- Combined living/dining flows to the large entertaining terrace
- Wooden floorboards throughout
- Two security car spaces with separate storage
- Three generous outdoor areas

View

As advertised or by appointment

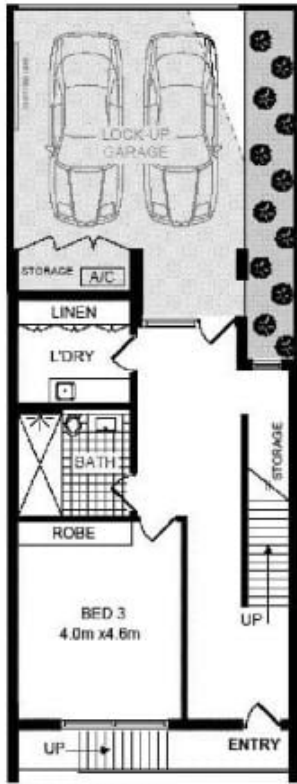
Agent

Sarah Fowell

 0437 492 129

 sarah@morton.com.au

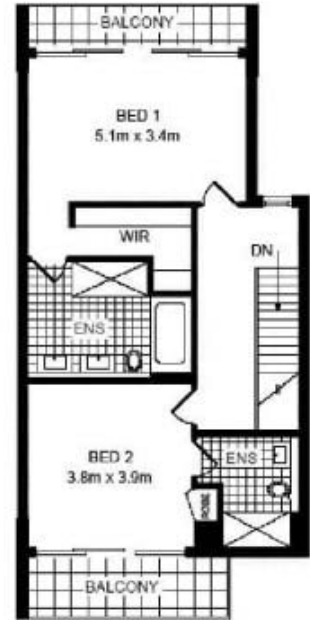
morton.com.au



FIRST FLOOR



SECOND FLOOR



THIRD FLOOR

