



# morton.

**Penrith** 801/101A Lord Sheffield Circuit

 2  2  1

This 102 Sqm top-level two-bedroom apartment is well located in the hub of North Penrith - Thornton Estate - offers convenient apartment living in a master-planned community only metres from the Penrith rail hub, Westfield shopping centre and local parks.

#### Features

- Skylight only afforded to top floor apartments
- Vast North facing balcony w views to the Blue Mountains
- Carpeted open plan living/dining with split A/C unit
- Entertainers gas kitchen w Caesar stone island benchtop
- Soft-close kitchen draws and cupboards, LED downlights
- Stainless steel Omega appliances including microwave
- Large master bedroom with walk-in robes and ensuite
- Flyscreens and block out roller blinds in both bedrooms
- Data/TV points in living and main bedroom
- Large internal laundry with omega dryer

#### View

As advertised or by appointment

#### Agent

**Amy Torbarina**

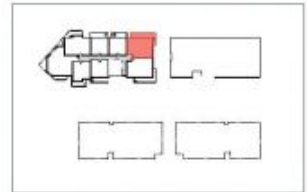
 0438 977 172

 amy@morton.com.au

[morton.com.au](http://morton.com.au)



# Apartment A801 2 Bed



|              |                          |   |
|--------------|--------------------------|---|
| Internal     | 80 m <sup>2</sup>        | N |
| External     | 22 m <sup>2</sup>        | ⊗ |
| <b>Total</b> | <b>102 m<sup>2</sup></b> |   |

0 2.5 5m

**THORNTON**  
ThorntonCentral.com.au

Disclaimer: This floor plan has been prepared for marketing purposes only. All descriptions, dimensions, depictions and other details in this floor plan (together the "Information") may not be to scale. The vendor reserves the right to vary or amend the Information without notice. The Information may vary from the actual dimensions, layout and characteristics of the property as built. No third party has any authority whatsoever either as agent or in any way, to make or give any representation or warranty or to bind the vendor in connection with the information or the property.  
Dedicated to: 23/02/2014. Version: 01