



# morton.

**Wentworth Point** J10073/17-19 Amalfi Drive

 3  2  2

Here is your opportunity to reside in Wentworth Point's finest and latest, One The Waterfront.

One The Waterfront offers a unique luxury lifestyle with high end indoor and outdoor facilities to entertain you all year round. Located at the foot of Wentworth Point, One The Waterfront is in easy access to transport services to Rhodes, Parramatta and Circular Quay.

- Generous open plan design with latest in décor finishes
- Quality designer kitchen with Bosch built-in appliances
- Secure parking - 2 car spaces
- Ducted air-conditioning
- Video intercom entry and lift access
- Beautiful communal gardens with landscaped surrounds
- Views to the water, parkland and the CBD skylines
- Walk to restaurants, Olympic Park, Ferry Wharf and specialty stores

### View

As advertised or by appointment

### Agent

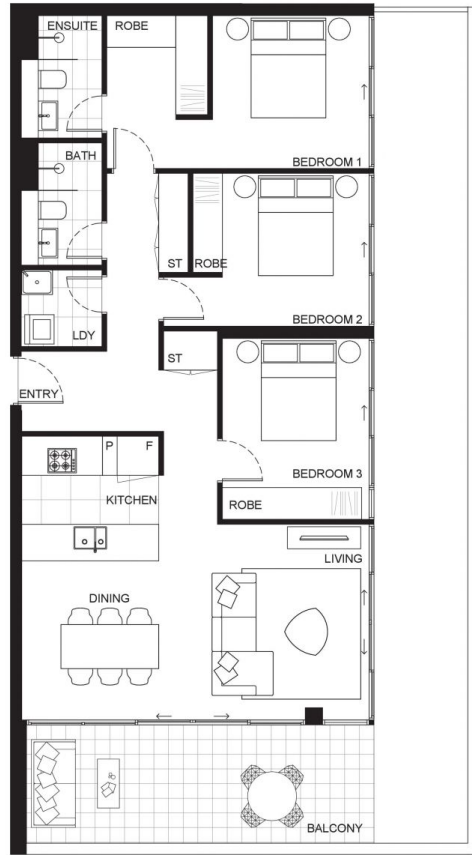
**Morton RE**



 rentals@morton.com.au

[morton.com.au](http://morton.com.au)

BUILDING  
ONE J



Disclaimer: This plan is a guide only and does not constitute an offer or contract. Please note changes may be made during the development and areas, fittings, fixtures and specifications are subject to change without notice in accordance with the terms of the contract of sale. All parties must rely on their own investigation to validate this information as it is not guaranteed. No liability will be accepted for any inaccuracy misstatement. **(Date Issued 01/04/16 C)**

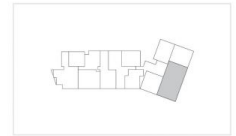
# ONE

THE WATERFRONT

APARTMENT | LOT  
**11073** | **46**

3 Bed

INTERNAL 101m<sup>2</sup>  
EXTERNAL 17m<sup>2</sup>  
**TOTAL 118m<sup>2</sup>**



BUILDING ONE J LEVEL 11

1300 865 465 [onethewaterfront.com.au](http://onethewaterfront.com.au)

DEVELOPED BY **PIETYTHP** SALES BY **LINK**