



morton.

Zetland 10/1 Defries Avenue

 1  1

Designed by award winning architects Turner + Associates, this spacious one bedroom apartment is Located in the ever popular ESP building in Victoria Park. Light filled and open plan as well as a quiet easterly aspect, this apartment is set ideally across the road from the impressive East Village shopping centre.

- Gourmet kitchen with high quality stainless steel appliances
- Excellent layout with open plan living and dining area
- Spacious bedroom with built in wardrobes
- Oversized bathroom with bath tub
- Separate laundry and plenty of storage
- Air-conditioning, video intercom entry
- Parking can be arranged at \$30pw for rent on request
- Landscaped gardens, gym and indoor swimming pool
- Numerous bus services to the CBD, airport, UNSW and beaches

View

As advertised or by appointment

Agents

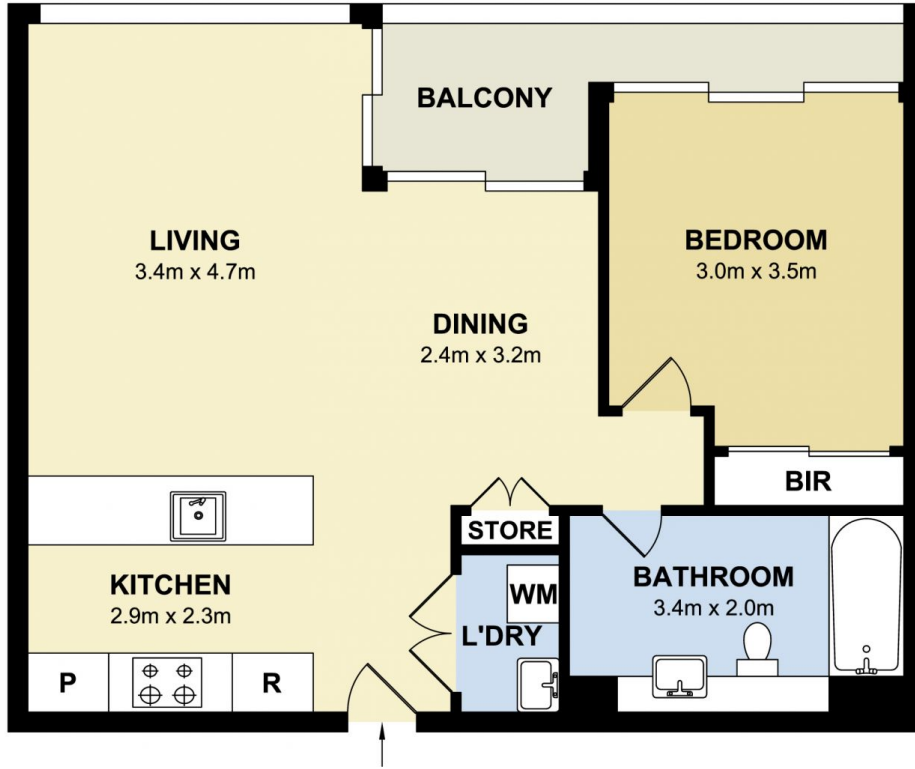
Calvin Chan

 0406 888 028
 calvin@morton.com.au

Konstantin Melnikov

 0421 540 424
 konstantin.melnikov@morton.com.au

morton.com.au



morton.

Zetland 10/1 Defries Avenue

