



morton.

Wentworth Point 229/25 Bennelong Parkway Ro

 1  1  1

The Waterfront is located moments to Sydney Olympic Park main venues, train station, Bicentennial Park and Millennium Parklands. Located in Positano, this is your opportunity to move into this one bedroom apartment only footsteps from The Promenade and The Piazza.

Apartment features:

- Private retreat located on level two
- Timber floorboards throughout
- Kitchen with plenty of cupboard space
- Stainless steel appliances and gas cooking
- Loads of natural light flowing into the living area
- Good size bedroom with built-in wardrobe
- Internal laundry with washing machine and clothes dryer included
- Secure car space

View

As advertised or by appointment

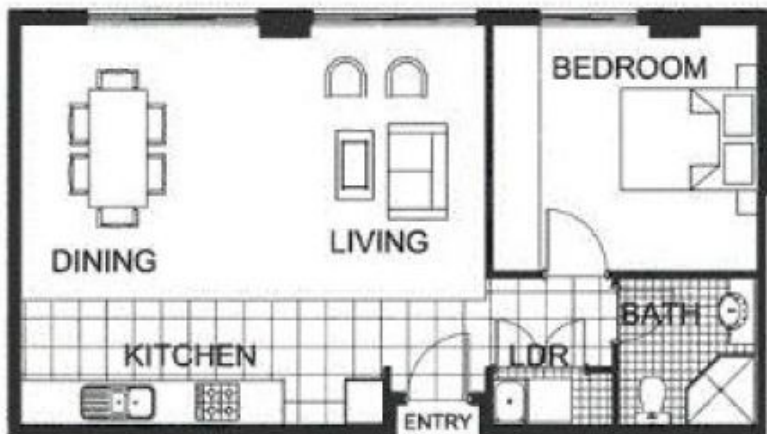
Agent

Sarah Fowell

 0437 492 129

 rentals@morton.com.au

morton.com.au



"The information contained herein is intended as an introduction to the general content of the project and is subject to variation. Interested parties should rely on their own enquiries and the contract for sale. The developer reserves the right to vary from these descriptions as it deems necessary or as any relevant authority may require."



THE WATERFRONT
AT HOMEBUSH BAY

1 BEDROOM

APARTMENT 229(Exist No.203)

INTERNAL AREA 54 sqm

TOTAL AREA 54 sqm

POSITANO