



# morton.

**Wentworth Point** 335/23 Savona Drive

1 1 1

This stylish ground floor apartment delivers a great low maintenance retreat and comes complete with a separate study and its own private courtyard for entertaining. Tastefully designed to give it a fresh and bright feel, it is complemented by a quiet position in the highly regarded 'Palermo' waterside complex in the heart of Wentworth Point's community that features exceptional resort facilities.

- Total 110 sqm unit: Approx. 60 sqm internal + 33 sqm courtyard
- Own street entrance via a large entertainment courtyard
- Bright open plan living space that leads to the outdoors
- Double bedroom that also has access to the courtyard
- Separate study area, air conditioning and good built-in storage
- Stylish gas-fitted kitchen and sleek caesarstone benchtops
- Security car space, caged storage plus intercom entrance
- Exclusive access to an outdoor pool, gym and barbeque area

## View

As advertised or by appointment

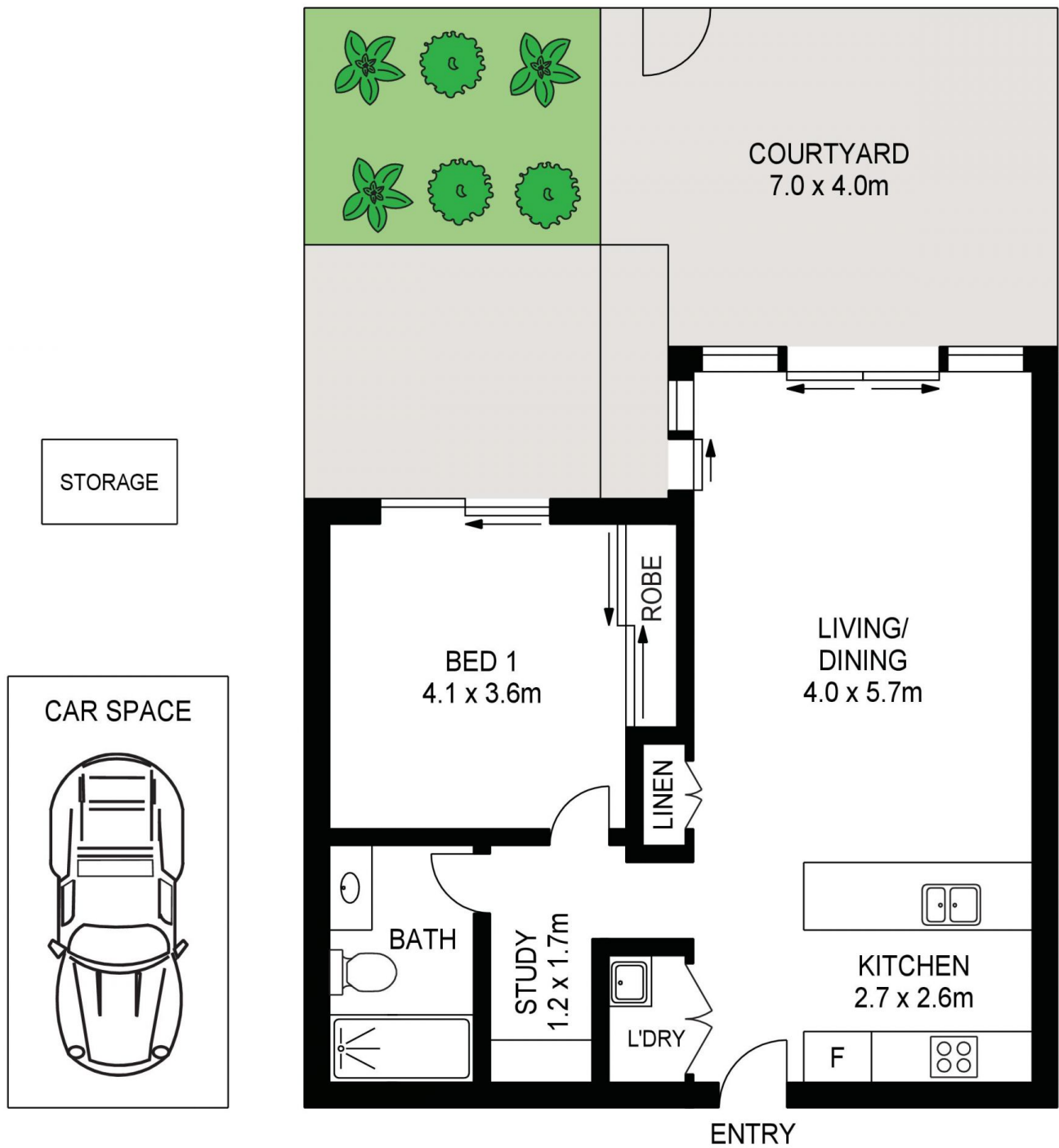
## Agent

**Dylan Choe**

0416 932 977

dylanchoe@morton.com.au

**morton.com.au**



APPROX. INT. AREA : 62m<sup>2</sup>

APPROX. EXT. AREA : 48m<sup>2</sup>

335/23 SAVONA DRIVE, WENTWORTH POINT



[www.assetphotographers.com.au](http://www.assetphotographers.com.au)

Please note these measurements are approximate only. The plans are intended as a rough guide for illustrative purposes. It is not warranted or guaranteed to be correct nor is it a part of the sale or rental contract.

