



morton.

Wentworth Point H12122/19 Amalfi Drive

 2  2  1

Great opportunity to lease one of the finest and latest apartments at One The Waterfront, an iconic development in Wentworth Point. Located at the foot of Wentworth Point, it is in easy access to transport services to Rhodes, Parramatta and Circular Quay.

- Generous open plan design with latest in décor finishes
- Quality designer kitchen with Bosch built- in appliances
- Bathroom has floor to ceiling tiles, mirrored vanity cabinet
- Spacious bedrooms with built-in robe
- Internal laundry with dryer, air-conditioning, fast speed fiber internet
- Security parking, video intercom life access
- Views to the water, parklands and the CBD skylines
- Close to restaurants, Olympic Park, ferry wharf and specialty stores

View

As advertised or by appointment

Agent

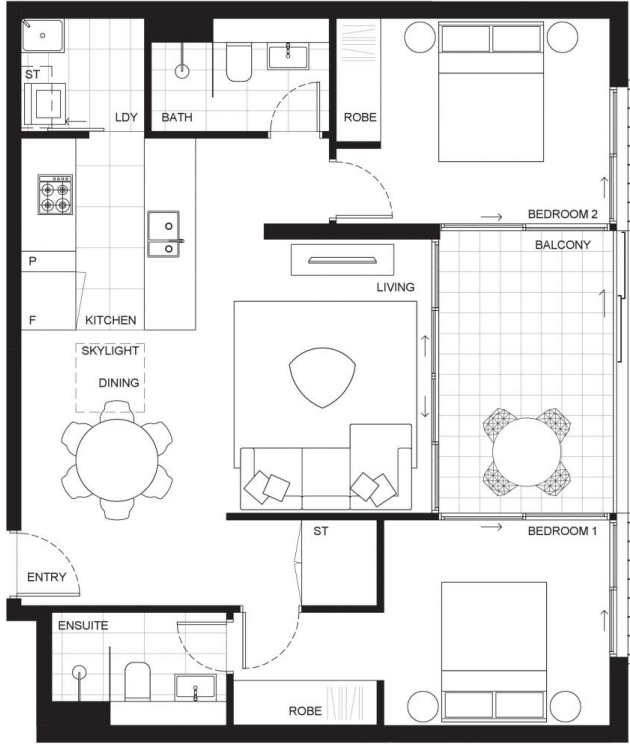
Zarin Hossain

 0418 328 479

 zarin.hossain@morton.com.au

morton.com.au

BUILDING
ONE H



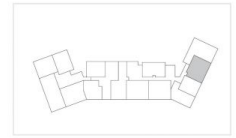
Disclaimer: This plan is a guide only and does not constitute an offer or contract. Please note changes may be made during the development and areas, fittings, fixtures and specifications are subject to change without notice in accordance with the terms of the contract of sale. All parties must rely on their own investigation to validate this information as it is not guaranteed. No liability will be accepted for any inaccuracy misstatement. **(Date Issued 01/04/16 D)**

ONE
THE WATERFRONT

APARTMENT | LOT
12122 | **74**

2 Bed + 2 Bath

INTERNAL 76m²
EXTERNAL 10m²
TOTAL 86m²



BUILDING ONE H LEVEL 12

1300 865 465 onethewaterfront.com.au

DEVELOPED BY **PIETYTHP** SALES BY **LINK**